

Petaluma Museum Association

Preserving the Unique History of Petaluma and Providing
Educational and Cultural Services to the Community

Quarterly Newsletter



'Tis the Season
Look inside for our upcoming events

Fall/Winter 2018

VOLUME 28, ISSUE 4

On the Cover

by Terry Park

THERE ARE MANY Christmas traditions which have evolved over time and one of the children's favorite is the arrival of Santa Claus in their town. The arrival can be grand such as the Macy's Thanksgiving Day Parade which has been a New York city tradition since 1924 and featuring large balloons of children's favorite characters.

Americo F Tomasini, the owner of Tomasini Hardware, who opened his hardware store in 1906 at 111 Kentucky Street (today Alchemia Gallery, next to the Carither's building) often sponsored a parade float. The 1935 photo taken at Walnut Park shows John Broxmeyer, an employee, dressed as Santa Claus. Apparently Americo couldn't procure any reindeer so he improvised with mounting antlers on each donkey.

The tradition was continued by his son George who took over the business when Americo passed away in 1940 at the age of 60. George made everyone forget about reindeer in 1948 when he rented a helicopter and landed in McNear Park much to the delight of children and parents. Santa then proceeded to Tomasini Toyland, which was upstairs.

Regretfully the Tomasini Hardware Christmas tradition ended in 1962 when George closed the front door at 140 Keller St (later Tuttle Drug Store and today Keller St Co Work) for the last time.

It was Americo's novel idea to have Santa Claus arrive in town on his sleigh, pulled by reindeer. This tradition continues today with Santa's River Boat Arrival on the first Saturday after Thanksgiving.



Petaluma Museum Association Board

Executive Officers:

President: Kathy Fries
Vice President: Debbie Countouriotis
Treasurer: Erica Barlas, CPA
Recording Secretary: Kit Schlich

Directors:

Clint Gilbert
Rob Girolo
Kate Hawker
Freyda Ravitz
Michael Slade
Elizabeth Walter
Marshall West

Parks & Recreation Dept.

Drew Halter

Recreation Music and Parks Commission

Megan Cusimano, Representative
Historic and Cultural Preservation Committee

Kit Schlich, Representative

Staff:

Angela Ryan, **Executive Director**
Liz Cohee, **Museum Coordinator**
Mary Rowe, **Membership & Newsletter Editor**
Solange Russek, **Collections Manager**

The Petaluma Museum Association Newsletter is published quarterly and distributed to our members. Many thanks to all our contributors and to our proofreaders and volunteers who help with our mailings.

If you would like to contribute any news or item of interest to our newsletter you can email to

mary@petalumamuseum.com

Deadline for submission is Jan 1, 2018

Petaluma Museum Association
20 Fourth St.
Petaluma, CA 94952



President's Message

THE MUSEUM CONTINUED to receive raves and crowds for the "I Do" exhibit throughout the summer. The public response was amazing and as a Museum we couldn't be more proud. We were honored to share the exhibit with journalists from off The Beaten Path/Sonoma County media Tour. The group spent time talking with curator Solange Russek and photographing our beautiful exhibit.

We had a lovely afternoon in the Garden Court at our Annual Volunteer Appreciation Luncheon in August. We are so fortunate (and thankful!) to have so many wonderful, dedicated volunteers who care about and invest their time in our Museum. Thank you to all who helped to make it an enjoyable day.

On the final day of the "I Do" exhibit we were rearranging for the next day. A real wedding took place at the Museum amongst the exhibit, where Ralph Scott and Kendra Murray actually tied the knot in a Petaluma Radio Players performance on Sept. 16th. Also in September we hosted Leadership Petaluma's "History Day" class. Thanks to all the presenters for making it an entertaining and informative day.

We hit the ground running in October, beginning with Rum Pairing Fundraiser on the 4th. A big thank you to Preferred Sonoma Caterers and Wilibee's Wine & Spirits for making these fundraisers possible. On Oct. 6th we held the much anticipated "PHL&M: A Story of Civic Progress & Pride" opening reception & dedication. This exhibit is the creation of award-winning curator, Paula Freund and is dedicated to Lucy Kortum, our own California Carnegie specialist. It was a special day. I encourage you to visit this wonderful exhibit about your Museum and its history. Paula is graciously offering to curate gallery tours on most Sundays at 2 p.m. through December 9th.

On Oct. 8th we shortened our board meeting in order to attend the co-sponsored event at the Petaluma Woman's Club, "In Conversation with Petaluma's Female Candidates" moderated by Lynn Woolsey. At the Volunteer Meeting on Oct.

10th we were treated to a tour of the exhibit by Paula Freund, learning details which we might have missed on our own!

The Museum had an especially busy weekend October 20-21 as we held three well attended events. Saturday morning was our Annual Cemetery Tour at Cypress Hill with the Petalumans of Yesteryear. It was so well received they added a second tour to accommodate all the attendees! Later that day historian Jeff Elliot gave a fascinating presentation on "The Making of Young Brainerd Jones" at the Museum. The next day, Terry Park gave an equally fascinating presentation on "The History of Petaluma Gas Stations." In honor of Dia de Los Muertos, Teresa Froschl installed our Annual Children's Community Altar, which is on display on the floor level.

The Fundraising Committee made the hard decision to postpone our Nov. 3rd Annual Fundraising Gala (stay tuned for a spring date), but we have many other informative and entertaining presentations and events scheduled through the end of the year. Please check out our Calendar of Events & Exhibits on pages 13 & 14 or visit our website for additional details. The Public Service Committee is busy working on our 2019 schedule of events and exhibits as well.

While visiting the Museum, we remind you to browse our gift shop area for unique local finds. And a friendly reminder that a PMA membership makes a thoughtful gift for any local history buff!

Thank you to all our members for their support throughout the year. And thanks to all our volunteers, docents, staff and board, who help us to continually offer so much to our community.

Kathy Barron-Fries

kathy@petalumamuseum.com

Executive Director's Corner



Angela Ryan

I was asked by Paula Freund, curator of the current exhibit "The Petaluma Historical Library, A Story of Civic Progress & Pride" to provide a statement on the current "renaissance" at the Museum. Her exhibit reflects on the history of the Carnegie Library and its journey to becoming the PHL&M. She wanted a summary of the recent accomplishments, including the hiring of an Executive Director (that's me!) and a Collections Manager; the acquisition of stunning new artifacts like the oil painting of George P. McNear; the dedication of the plaque to the Museum Oak; and many more.

She also requested that the statement looked to the future, laying out our vision for the next series of achievements and accomplishments. One of my main roles as ED of the PMA is to constantly be looking to the future and, along with the Board of Directors, envisioning what we'll be doing 3, 5, 10, 40 years from now. Below is a condensed version of the statement I provided (find

A RENAISSANCE AT THE PHL&M

the unabridged statement in the exhibit, on display through December 23).

For forty years, the Petaluma Museum Association has existed to preserve the unique history of Petaluma and provide educational and cultural services to the community. Remarkably, for much of that time, the PMA was an all-volunteer run organization. Today, thanks to the cooperation with the City of Petaluma and the foresight and dedication of the PMA Board of Directors, the museum is staffed by professional employees, including a full-time Executive Director and part-time Collections Manager.

With the wind at it's back, the Petaluma Museum Association enters its forty-first year with renewed focus on being the caretakers of Petaluma's past, eager to make the museum even more of a pillar and a hub of the local community. The PMA Board and Staff are dedicated to ensuring that The Petaluma Historical Library & Museum remains the repository of our shared past, and that it continues to be the site of opportunities for all people to experience, celebrate and explore that past, to make connections in the present and build bridges together to the future.



A Message from Heritage Homes

THIS YEAR MARKS the **fiftieth anniversary** of Heritage Homes and Landmarks. Established in 1968 to help preserve the heritage of the Petaluma area through the promotion and encouragement of the preservation and restoration of vintage buildings of historical, architectural or cultural significance.



this year's Holiday Lighted Parlor Tour!

This tour is a beloved holiday tradition for many, and we need homes and volunteers to put this tour together.

If you'd like to have your home on this holiday tour, please contact us at heritagepetaluma@gmail.com. The Holiday Lighted Parlor Tour

One such means is through tours of our homes with beautiful architecture. And after an extended absence, we are looking for 3-4 homes to be on

generally includes only a few rooms of a house, the front rooms or the parlor, and holiday decorations are an important part of the tour.

MUSEUM HIGHLIGHTS

On Sept. 16 young poets read their work at the museum

For the third year, the Petaluma Historical Library and Museum has hosted student readers during the Petaluma Poetry Walk. This year's young poets read work in both Spanish and English. Phyllis Meshulam, emcee for the evening, also read from her full-length poetry book, *Land of My Father's War*. Phyllis Meshulam and Jackie Huss Hallerberg (not pictured here) represent these students' teachers from California Poets in the Schools (CalPoets), a statewide organization that has helped students express their creativity, imagination, and curiosity through poetry since 1964. Visit their website: <http://www.californiapoets.org/>

Special thanks to John Johnson, host for this special reading, who was the original inspiration to have students read as part of the Petaluma Poetry Walk.

(Continued on page 9)



l to r Daniela Lopez Arreguin, Brooks Elementary School
Cristina Avelar, Maria Carrillo High School
Kenna Cohan Arteaga, Twin Hills Middle School
Arisbet Camacho, Comstock Middle School
Phyllis Meshulam, Sonoma County Poet-Teacher and
Coordinator of the County Poetry Out Loud Competition



Tilak Raj Shukla
President

1410 S. McDowell Blvd. #E
Petaluma, CA 94954
B: 707-765-1232
C: 707-364-7703
trshuk@gmail.com

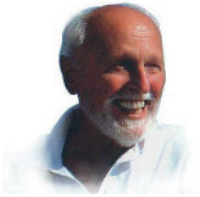
Adobe Beverages and Foods, Inc.

Costarella Seafoods, Inc
QUALITY PRODUCTS
PIER 45 SHED B#8
Bob Costarella
P.O. BOX 192484 • SAN FRANCISCO • CA 94119-2484
OFFICE 415-674-0175 • FAX 415-674-0180 • CELL 415-517-3211
bc@costarellaseafoods.com • www.costarellaseafoods.com

Wayne Dunbar
(707) 773-9000
159 Kentucky Street, Ste. 2
Petaluma, CA 94952
wayne@aftertec.com
aftertec advanced imaging

PETALUMA
RADIO
PLAYERS
'Like Talking On-Air!'
RALPH SCOTT
Supervising Producer
ralph@petalumaradioplayers.com
(707) 971-9419

America's Yesteryears
Exhibits, Research, Educational
Don Siemens
Historic & Chemical Ecology
P.O. Box 218
Bodega Bay
CA, 94923
707-364-1643
Dosiem@comcast.net



Petaluma History & Commentary

by Skip Sommer, Historian

THE DEVASTATING STORMS OF 1861-62

THE TRAGIC CALIFORNIA fires of these last 12 months are undoubtedly some of the worst natural disasters we've ever witnessed here. There is no question in this columnist's mind, that the world's debate on "climate change" shouldn't just be a "debate" anymore, it's here. We must accept that, to attempt to ameliorate it.

However, in California, natural disasters occurred long before statehood and were often water-related too. The worst winter storms in our state's history occurred 157 years ago, and the unprecedented floods of that winter were described by the Petaluma Argus as "devastating and ruinous," and the editor warned that it was, at that time, "impossible to approximate the number of lives lost."

To putting that winter into national perspective: the American Civil War had just begun, Abraham Lincoln had been President for only a few months, California had been a state for eleven years, Petaluma had been franchised as a city for only three years and the California state legislators of 1861-2 had been forced to convene in San Francisco, because Sacramento had been virtually washed off the

map. What was left of our entire state capitol could only be reached by rowboat in winter of 1862.

The seemingly endless torrential rains had melted all of the Sierra snows and both the American and Sacramento Rivers had overrun their banks, collapsing

Sacramento." Little did they know, it was only the beginning.

By January 12, the rains had driven thousands of California families from their homes, and here in Petaluma, many roads were deemed totally impassible. The San Francisco Call Newspaper, on January 12th, stated that Oregon, Washington and California alike had "been wrecked," and that "Sacramento has been drowned out of existence." California Governor, Leland Stanford, had to be rowed from his offices, and the work on the river levees was halted in frustration, as they had just collapsed again, after repair.

One quarter of California's economy had been destroyed in those storms. Thousands of cattle, sheep, hogs, horses and mules had been

killed. Many more, humanely released from their paddocks and barns in an attempt to save them, were never seen again. The earth was soaked, farms were destroyed and buildings washed away. It was pandemonium.



Sacramento under water circa 1862

many levees. By January 1 of 1862, the water level in those rivers was 22 feet above the highest mark ever recorded! Our Petaluma Argus reported early on that "Sunday, December 8th ('61), was "a night of terror in

*Note this incredible statistic: Between November 9, 1861 and January 14, 1862, (just 35 days), 72 inches of rain had fallen in the San Francisco Bay Area! To put that into current perspective, that was nearly **three** times the amount of rainfall from recent Hurricane Florence, in the East Coast Carolinas. About 80,000 people lived in Marin and Sonoma Counties then, and most had been farming the land.*

The Sonoma County Register stated;

“The town of Sonoma is submerged and Santa Rosa is inundated in the most extraordinary flood ever known”.

Meanwhile, in Washington, President Lincoln had addressed his new Congress, asking the (paraphrased) Civil War question: “Can a democracy, a government of the people, by the same people, maintain its territorial integrity against its own domestic foes?” Fort Sumpter had just fallen and the President then stated that, “with deepest regret,” he was forced to call out the war power to fight against these destructive forces. It was to be a long bloody war affecting all, including those on the West Coast.



Governor Leland Stanford

Sonoma County was then considering the local effects of the Civil War, as well as the immediate impact of our floods. Petaluma undertaker O.H. Lovett was advertising “a full line of coffins and grave clothes” for local consumption. It was a timely offer, as it was estimated that there would be well over 500 deaths from the storms, just within the Bay Area. Our Argus Editor opined: “Our city has been visited by the most terrible flooding and our farming will suffer materially. It may be utterly impossible to plant the spring crops.” (It wasn’t).

California’s population was about 500,000 at the start of 1862. But, with Orange County then *a lake*, and Sacramento County, flooded *for miles* in all directions, no one could tally the death toll that early. Twenty-five percent of all buildings in the state had been flooded and ruined. And, get this: Even the Mojave Desert and the Los Angeles basin had become lakes. The Golden State of California had been submerged into great human tragedy, as well as bankruptcy.

But, even in those desperate hours, Petalumans were rallying to help-out Sacramento.

The Argus said that

“citizens were gathering provisions to be sent, including food and articles of apparel, both mentionable and unmentionable.” (?) They would be delivered via the “staunch & favorite Steamer, Kate Hayes” from Haystack Landing, (two-and one-half miles below Petaluma), to the swollen Sacramento River.

Could this flood tragedy happen here again? Well, the 1861-1862 disaster has been labeled by the experts as “The 500 Year Storm,” so (*maybe*) we’ve got another 344-some years to go. But keep alert: weather gurus now say that the expected ten-degree rise in ocean temperature on the West Coast may cause East-Coast-type hurricanes to develop here. Plus, what if global warming melts the snow pack in the Sierras again? Two more things to worry about, folks. (Sorry about that).

HISTORICAL NEWS OF PETALUMA

by Solange Russek & Michael Slade

We would like to acknowledge the California Digital Newspaper (CDN) Program of UC Riverside, the source of all of the items that are going to be presented in this column. The CDN Collection is a project of the Center for Bibliographical Studies and Research (CBSR) at the University of California, Riverside. The CDN Collection is supported in part by the U.S. Institute of Museum and Library Services under the provisions of the Library Services and Technology Act, administered in California by the State Librarian.

Sonoma Democrat May 15, 1886

Electric Lights for Petaluma.
According to the *Imprint*, the electric company of Petaluma is making extensive arrangements for their exhibition of lights, and will probably be ready for operation as soon as the nights become dark. As near as can be learned the lights will be located as follows: Corner of Main and Washington, corner of Prospect and Liberty, corner of Keller and Washington, corner of Western avenue and Liberty, corner of Keller and D, center of D street plaza, corner of B and Third, and corner of D and Sixth

Petaluma's early street lighting seems to have been a rather patchy affair.

Press Democrat Feb 18, 1899

Lighting Plant Changes Hands
A deal has been closed between the Petaluma Electric Light company, controlled by members of the Burdell family, and the Petaluma Gas Light company, for the purchase by the former of the latter's plant, franchise and property. Mr. Mills, present engineer at the gas works, will be retained, and Superintendent Ortman will take charge of both plants. The old coal gas system will be renewed, and a first rate service rendered to customers, says the Argus

An early example of merger and acquisition with the perennial promise of superior service.

Sonoma Democrat November 14, 1885

Music by Telephone.
Last Saturday night, while the amateur band was playing in the street, the connections in the telephone office happened to be open, when the man at the telephone in Petaluma heard the music clear and distinctly, being able to tell the tune they were playing,

19th Century live streaming

THE PETALUMA HISTORICAL LIBRARY & MUSEUM
presents Wednesday Dialogues at the Museum



Come join us for an evening of storytelling & pictures with

JOHN SHEEHY & SCOTT HESS
authors of the newly released book

On a River Winding Home

Wednesday November 28th at 7 PM

Petaluma Historical Library & Museum
20 Fourth Street (at B Street)
PetalumaMuseum.com 707-778-4398
Register for free at Eventbrite

“This is a truly wonderful book, in the poetry of the writing, the meticulous research, the knowledgeable commentary, and the vivid photography.”

— ADAIR LARA, author of *History of Petaluma: A California River Town*

“Story-telling at its best, with delicious images of the special place that can only be Petaluma.”

— LYNDI BROWN, *Sonoma County Gazette*

“Sheehy and Hess bring the Petaluma River Watershed to life with fascinating stories and stunning photos. The native people, the settlers, the landscape and the city itself are chronicled in rich detail. This book is a must-read for anyone who lives in the North Bay.”

— CHRIS SAMSON, *Petaluma Argus-Courier* editor 1984-2012

“The stories and the portraits of the fascinating people who came to live here and make the land their own, are the best I have read... anywhere. Bravo!”

— SKIP SOMMER, *Petaluma Argus-Courier*

“This is a fine, handsome book, telling many of the best stories of old Petaluma.”

— LEE TORLIATT, *The Sonoma Historian*

MUSEUM HIGHLIGHTS

Rum & Pirates

On Oct. 4 we had another wonderful multi-course dinner prepared by Preferred Sonoma Caterers and paired with select rums from Willibees Wines & Spirits. There were several guests in Pirate attire and the word is out that all had a spirited time.

Thanks to all the volunteers who made this fundraiser a success!



Exhibit opening draws a large crowd

THE MUSEUM'S LATEST exhibit on display *The Petaluma Historical Library & Museum: A Story of Civic Progress & Pride* opened with a reception on Oct. 6.

Paula Freund, curator, has succeeded in presenting to the public a comprehensive history of the Petaluma Carnegie Library using a variety of communicative media including photos, text and audiovisual

components. Visitors are taken on a journey from the earliest beginnings of libraries in Petaluma, the road to getting a Carnegie library built in the community and ending with its present use as a historical library and museum. Architectural artifacts and blueprints are also displayed and are key components in understanding the beautiful design of the building.



Lucy Kortum honored at opening reception

HISTORIAN LUCY KORTUM was honored at the opening of the “*Petaluma Historical Library & Museum, A Story of Civic Progress & Pride*” for her role in preserving not only the PHL&M but many additional California Carnegie libraries.

The celebration started with a toast to Lucy by Andrew Carnegie (aka Leif Ortegren, POY) This was followed by a city proclamation read by Mayor David Glass. Paul Heavenridge, Library Commissioner of the City of Petaluma presented Lucy with a framed Proclamation of Appreciation from California State Librarian, Greg Lucas.

Paula Freund gave a heartfelt thank you to Lucy for imparting her vast knowledge of the Carnegie libraries.

Kathy Fries, PMA President, presented to Lucy a token of the museum’s appreciation, a beautifully bound three volume set of her masters thesis, “Carnegie Library Development in California and the Architecture it Produced, 1899-1921”



The exhibit will be on view until December 23, 2018



Susan Coolidge as Clara McNear
Jerry Pozo as JA McNear

Petalumans of Yesteryear Bring History to Life at our Annual Cypress Hill Cemetery Tour

On October 20th attendees of this year’s Annual Cemetery Tour were entertained and enlightened as they visited the resting places of Petaluma’s prominent early citizens. These historical figures portrayed by the Petalumans of Yesteryear dressed in period garb came to life to share their stories.

The following information was written by Bill Hammerman:

The crown of the McNear legacy is Cypress Hill Cemetery. That legacy directly relates to Clara and the love her husband had for her. She died in the cold, rainy January of 1866 at the age of 29. The soil in the community burial grounds, Oak Hill Cemetery, was saturated. Water kept filling in the gravesite. So, John went looking for a high, dry place for Clara. He found it on the highest hill in what is now Cypress Hill Cemetery, where Clara and other members of the family and the community are buried.

The beautiful McNear family monument seen pictured in the photo on the left was of Italian marble and was constructed by A.C. Thompson.

The Petalumans of Yesteryear conjure the world of turn-of-the-century Petaluma and discuss the origins of Petaluma's Carnegie Library

The Petaluma Historical
Library & Museum

Wednesday,
November 14, 7:00 pm



Are you interested in Time Travel? Join others at the Petaluma Historical Library and Museum on November 14 at 7 pm, when the Petalumans of Yesteryear offer a "new and improved" entertainment based on the history of gaining a Carnegie Library

for the city. See JA McNear act as moderator; hear Addie Atwater's story! Meet Andrew Carnegie and Brainerd Jones, and listen in on a meeting with Mayor Veale; take a peek at a meeting of The Ladies Improvement Club, attend a parade, and MORE!

Andrew Carnegie and the American Public Library Movement



A Presentation by **Kenneth Breisch, Ph.D.**
Associate Professor, School of Architecture
University of Southern California

@ The Petaluma Historical Library & Museum
Saturday, December 8, 4 pm

The Petaluma Museum Association is proud to announce "Andrew Carnegie and the American Public Library Movement," a presentation by Dr. Kenneth Breisch. An acknowledged authority on library architecture, Breisch is the author of *Henry Hobson Richardson and the Small Public Library in America* (MIT Press, 1997); *The Los Angeles Central Library: Building an Architectural Icon, 1872-1933* (Getty Research Institute, 2016); and *American Libraries: 1730-1950* (Library of Congress and W. W. Norton, 2017).

Scheduled to coordinate with the Petaluma Museum Association's current exhibit, "The Petaluma Historical Library & Museum, A Story of Civic Progress & Pride," Breisch's presentation will further our appreciation and understanding of the PHL&M by elucidating the historical and cultural movement which originally gave birth to it as a Carnegie library.

PLEASE PATRONIZE OUR EXHIBIT'S GENEROUS, COMMUNITY-MINDED SPONSORS



The monthly Board of Directors meeting is held every second Monday of each month at 6:00 PM.

Location: 20 4th Street
(Please enter through the back door)

Public Welcome.



Your business card here

Become a Business Sponsor, Company Sponsor or Corporate Sponsor and enjoy the many benefits at those membership levels.

Business Sponsors will have their cards appear in the newsletter four times a year.

Company or Corporate Sponsors will have their logo appear in the newsletter four times a year.

Please check out the membership brochure enclosed with this newsletter for more details.

Support your local museum!




Like us on Facebook:

Petaluma Historical Museum

CLINT GILBERT LIGHTING DESIGN

510-644-2701
CLINTBELOVE@GMAIL.COM
LOVEOFLIGHT.NET

Make your next event SPECIAL!

CONSULTATION • DESIGN



Musical Mondays at the Museum
Join Kayleen Asbo, Ph.D for
"Conversations Across the Centuries"
10:30 am-12:00pm
Petaluma Historical Library and Museum
Concerts, classes and lectures that will change
the way you experience classic music
www.kayleenasbo.com



SUMMIT STATE BANK

SMT SPAULDING
MCCULLOUGH
& TANSIL LLP

WARREN L. DRANIT
ATTORNEY AT LAW

90 South E Street Suite 200
Santa Rosa CA 95404

11 Western Avenue
Petaluma CA 94952
www.smlaw.com

Tel 707 524 1900 Santa Rosa
Tel 707 283 0000 Petaluma
dranit@smlaw.com



STEVEN J. LAFRANCHI & ASSOCIATES, INC.
CIVIL ENGINEERS - LAND SURVEYORS - LAND PLANNERS

STEVEN J. LAFRANCHI, RE., P.L.S.
PRESIDENT

PETALUMA THEATRE SQUARE
140 SECOND STREET • SUITE 312 • PETALUMA, CA 94952
TEL 707-762-3122 FAX 707-762-3239
steve@sjla.com

Museum Events & Exhibit Schedule

Third Wednesday Dialogues

Wednesday, November 28 at 7:00pm

As part of our continuing series Wednesday Dialogues at the Museum, please join us for this very special event to celebrate the publication of "*On a River Winding Home*" Stories and Visions

of the Petaluma Watershed with photos by Scott Hess and historical vignettes by John Sheehy. This book is sure to be a welcome and beautifully rendered addition to the historical literature on our town. Copies of the book will be available for purchase, and after the presentation, Scott and John will be on-hand to sign.



Members Holiday Party

Friday, December 7 at 5:00pm

Please join us for a night of friendship, warmth and delicious treats as we celebrate our members' generous and continuous support.



Nigel Armstrong

Nigel Armstrong, internationally acclaimed classical violinist will perform for our Tenth Anniversary NYE GALA

Monday, December 31 6:00 to 8:00 pm

This year our NYE Gala concert will welcome violinist Nigel Armstrong, who presently serves as concertmaster of the Santa Cruz Symphony. In 2009, Nigel performed at the museum for our first New Years Eve concert and we are delighted that he will return this year for a special guest appearance. Armstrong left his hometown of Sonoma to study at the Colburn School in Los Angeles and the Curtis Institute of Music in Philadelphia. He has studied under celebrated violinists Arnold Steinhardt and Donald Weilerstein, among others. Nigel has performed with the likes of the San Francisco Symphony, Boston Pops, Los Angeles Chamber Orchestra, Dusseldorf Symphony and the St. Petersburg Philharmonic, among others.

Elizabeth Walter, pianist and the series creator and coordinator of the annual NYE concert has chosen the music of Bach, Schuman and more. Beloved high-caliber musicians from the San Francisco Symphony, Yun Chu, violin, Shu-Yi Pai, cello, and Amy Hiraga, violin will also return for this anniversary performance.

Please check our website petalumamuseum.com or call 778-4398 for more details and to purchase tickets.



Music Man Sing-A-Long

Sunday, January 13, 2019

Bring the whole family for this joyful event of a bygone era. Our Music Man will pay homage to Ron Walters (The

Voice of Petaluma) who starred in the Petaluma Production of Music Man at the Phoenix Theatre in 1978. More details to come.

7th Annual Jazz Concert Celebrating Black History Month



Friday, February 1, 2019

The concert features local vintage jazz & blues group, The doRiaN Mode, with Dorian Bartley, bass/vocals, Bob Johns, piano/cornet, David Scott, sax/flute and Tony Blake, percussion.

Thursday, February 7, 2019

Black History Exhibit: "Black Migrations in the Twentieth Century through Today"

African American migration patterns included relocation from southern farms to southern cities, from the South to the Northeast, Midwest, and West; from the Caribbean to US cities and into European cities. This movement has given rise to a growing number of black industrial leaders, black

entrepreneurs and blacks in the music industry and other art forms.

Our exhibit will take you through many of the changes that have taken place in the US during the twentieth century through today and the African American impact on these changes. The Black Migration emphasizes the movement of people of African descent to new destinations and subsequently to new social realities.



Clo & Gene Bendetti

Opens April 4: Special two-for-one exhibit with something for everyone!

Help Clo the Cow celebrate her 50th birthday as the Clover spokesperson.



Scott Hess

And, enjoy a selected collection of images by photographer Scott Hess from the newly published book *On a River Winding Home: Stories and Visions of the Petaluma River Watershed* by Hess and John Sheehy.



Joe Wayne: A Photographer's Eye

Coming this summer!

Exhibit featuring the work of Petaluma Photographer Joe Wayne between 1910-1916.



Kenneth J. Nugent, CFP®
Portfolio Manager/Account Vice President Wealth Management

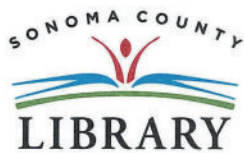
UBS Financial Services Inc.
555 California Street, Suite 3400
San Francisco, CA 94104
Tel. 415-954-5911, Fax 855-291-9487
Toll Free 888-283-7103
kenneth.nugent@ubs.com
http://financialservicesinc.ubs.com/fa/kennethnugent/

UBS Financial Services Inc. is a subsidiary of UBS AG. www.ubs.com

Cathy Edmondson
REALTOR®
CalBRE# 01995911



cathy.edmondson@cbnorcal.com www.CathyEdmondson.com
M. 707.479.3875
O. 707.775.2233
165 First Street Petaluma, CA 94952



Katherine J. Rinehart, M.A.
Manager
History & Genealogy Library

(707) 308-3228

www.sonomalibrary.org

211 E Street
Santa Rosa, CA 95404
krinehart@sonomalibrary.org

DISCOVER • LEARN • SHARE



Steve Countouriotis

California Northwest
Chapter
5297 Aero Dr.
Santa Rosa, CA 95403
Cell (707) 364-3523

scount@yahoo.com

O: (707) .763 .5475
F: (707) .778 .8417
E: info@Wedgeroofing.com



5 Casa Grande Road, Petaluma, CA, 94954 Insured PL & PD Wedgeroofing.com



Linda Buffo
REALTOR®, SRES
Your Trusted Partner in Real Estate
CalBRE D1331391

BUNDESEN
616 Petaluma Boulevard South
Petaluma, CA 94952
Mobile 707.696.9368
Office 707.769.9000
Fax 707.762.1032
Email linda.buffo@bundesen.com
Website LindaBuffo.com



Each office is independently owned and operated

**Hale's Hardwood
FLOORING**

Peter Hale

2 Josette Court
Petaluma, CA 94952
peter@haleme.com

Lic. # 675678
Office (707) 769-0599
Cell (707) 217-7847

Kit Lofroos, MA LMT^{NM} | CMT^{CA}

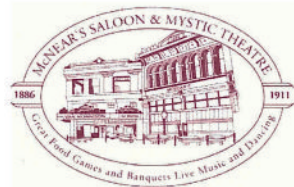
(707) 931-8212

by appointment



lofroos.org

State of NM License #2001 | State of CA Certification #14321



**McNEAR'S
RESTAURANT
& MYSTIC THEATER**

Kenneth O'Donnell
Owner/Booking
Cell: 707-338-8669
ken.mcnears@gmail.com

23 Petaluma Blvd. N.,
Petaluma, CA 94952
Office: (707) 765-9211
Fax: (707) 765-4671
www.mcnears.com
www.mystictheatre.com



Elder Financial Protection Network
Ruth W. Robeson, Esq.
Executive Director

17 Keller Street, Suite A
Petaluma, CA 94952
707.981.8403

ruth@efprotection.org
www.efprotection.org

Membership

NEW MEMBERS

Scott Alonso, Deneane Ashcraft, Faye Bourret, Julie Brewer, Erin & Jason Briggs
Susan Cluff, Carol Cook, Dan Fix, Roberta Martinelli McElroy, Brian Mealins & Cynthia Renfrew, Doris Pareas
Gail Ravitz, Patricia Tuttle Brown & Stephen Volz, Connie & Rod Williams

RENEWALS

Bill Allen, Dennis Andersen, Christa Bechler, Mary Beene, Shirley Blum, Sean Bressie, Norman Brewer, Maggie Carlson, Lynn Cominsky, Tom & Linda Corbett, Sue Davis, Wayne & Lisa Dunbar, Paul Eklof, Majida Gibson, Joanne Goebel, Haroldine Hansen Marvin Hanson, Christie Heller, Church Hildrith & Rick Brereton, ADR, Jennifer Jackson, Homer Johnstone, Douglas & Linda Karr, Lynn & Thom Knudson, Steven J. Lafranchi, Jeff Lee, Dan & Laurie Lutz, Barbara Maxwell, Nancy Maynard, Jim McCormick, Diana Painter, Claire Pass, Donald Patterson, Brenda Paupst, John & Evelyn Pedroni, Al & Marret Poehlmann, Paul & Judy Praetzel, Waltraud Noriel, Michael Slade, Karen Tamborski, Pat Riley, Alexander & Carol Sachal, Pat Skinner, Virginia Stevens-Johnson, Eric & Mary Ann Swanson, Tim & Janet Talamantes, Brian Tolson, Gail Unzelman, Royce & Carolee Van Bebber, Steve vonRaesfeld, Elizabeth Young, Carol Weisker, Jack Withington

DONATIONS

Judith Allewelt in memory of Philip May
Erica Barlas
Sally Brasseur in honor of Katherine Rinehart
Jack Withington

LIFETIME MEMBERS

Linda Adams & Ken Larson, Mr. & Mrs. Marv Ashman, Bacchus Real Estate, Garth Bixler & Steven Barclay, Teresa Barrett Ron Bausman & Art Wagner, Sherri Brungart, Jim Becker, David Best & Margaret Roth, Ann & Gordon Blumenfeld, Walter & Marilyn Bragdon, Tom & Kathy Brandal, Virginia Breedlove, Sherri Brungart, Paul Canorro & Kelly Collins, Joseph & Carol Castillo, Susan Morvay Chappell, Coddling Foundation, Clark & Susan Coolidge, James and Liz Cohee, Steve & Judy Collins, Jim & Lori Cornaggia, John Cota, Judy Curtis, Angela E. De Carli, Daniel & Elissa DeCaro & Family, Dennis & Charlene Deen, Marvin & Shirley Dolowitz, Karen & James Ely, June Ferguson, Bonna & George Flynn, C. Michael Forrest, Alice & Donald Forsyth, Jim & Kris Foster, Terry Fraser, Paula Freund & Paul Heavenridge, Kathy & Richard Fries & Family, George & Margaret Gambonini & Family, Marvel Gardner, Cheryl & Derlin German, Marie Isabel Girolo, Robert Girolo, Alexa Glockner, Ken & Annette Goltermann Family, Margaret Gossett, Kathy Greene, Connie Hammerman, Matt & Ginny Hautau, Mike & Beth Healy, Toby & Pat Herfindal, Ann Hobrecht, Miriam Hodge, Timothy & Marianne Hurley, Gary & Lynn Imm, Carol Isaak, Helen Issel, Toby Kaehler, William & Denise Kane, Roanne & Davis Kaplow, Steve & Karen Kemmerle, Lucy Kortum, Terry Kosewic, Daniel Krieg, Jack & Verna Krout, Kathleen LaRusso, David & Mary Lee, Rollie & Shirley Leeburg, Catherine Lehmann, Michael Lennon, Paul & Marlene Lewis, Blanch Lieb, Sid & Gerry Lipton, Connie Brandner Loughary, Colleen Mahoney, Theresa & Peter Mahoney, Amy Malaise & Gary Fusco, Peter Masi/Master Cleaners, Evelyn Matteri, Elizabeth McBride & Don Shaw, Shirley B. McDonald, Mc Dowell Drug Task Force, James & Sue Mc Isaac, Keith & Debbie McNeil, Robert & Virginia Merwin, Max Mickelsen, Flora Mickles, Pierre & Sonja Miremont, Montoya & Associates, Ann Moreno, Tim & Lori Nelson, Tammara Norman & Edwin Hamilton, Dustin O'Brien, Mike O'Brien, Michael Orton, Ross Parkerson, John & Karen Perlis, Edward Peterson, Ray & Ettamarie Peterson, Charles & Mary Pheil, Russel Pleech, James Power Millwork, Lawrence Reed, Dan & Ann Reed, Ed & Bernadette Ricci, Tim & Deborah Riddle, Katherine & William Rinehart, Walter & Emily Roeder, Rotary Club of Petaluma, Jerry & Mary-dee Roy, Gloria Salick, Warren & Susie Salmons, Nancy Sasser, Kit & Steve Schlich, Richard & Lucille Sharke, Jeff Smith & Alicia Wallace, Nicole & Dave Snider, Skip Sommer, Springfield Place, Kaye Stack, Clarice Stasz, Thomas & Mary Stelzner, Elaine & Christopher Stevick, Barbara Tornberg, Evan Williams & Elizabeth Tyree, UBS Financial Services, Gene & Lenore Urbain, Larry & Jan Vannucci, Vietnam Veterans of America, Chapter 563, Susan Villa & Family, Volpi's Italian Market, Michael & Elaine Von der Porten, Mary Renner & Linda Vourlogianes, Marcie Waldron, Ruth Walker, Olga Walker, Judy Walters, Jan Widdowson, Lauren Williams, Sarah Young, Scott & Meredith Young, Nick Zaillian, Ruth Zveinieks



MEMBERSHIP BENEFITS & CATEGORIES

BASIC BENEFITS OF ALL MEMBERSHIP CATEGORIES:

- Discounted admission to temporary exhibits (admission to the library & permanent exhibits is free to all)
- Reserved seating at the Butter & Egg Parade
- Subscription to and acknowledgement in the **PMA** newsletter
- Personalized membership card
- 10% off Museum store merchandise
- 10% off gift memberships
- Invitations to previews & receptions

INDIVIDUAL \$35

All Basic Benefits
(\$20 memberships are available in this category to: Seniors, Educators, Students. Military is free)

FAMILY / DUAL \$70

All Basic Benefits, PLUS:
•Extension of Basic Benefits to an additional adult & children in the same household up to age 17
•Two personalized membership cards

RECIPROCAL MUSEUM MEMBERSHIP PRIVILEGES - "Museum Goer" Benefit

If you join the **PMA** at the Supporter level (\$125) or higher, you will receive free or discounted admission to more than 600 museums in the U.S. Some of the top Bay Area participating museums are:

**Asian Art Museum • Walt Disney Family Museum • de Young Museum • Legion of Honor
CA Historical Society Museum • Charles M. Schulz Museum • Sonoma County Museum**

SUPPORTER \$125

All Family / Dual Benefits, PLUS:
•**Reciprocal Museum Membership Privileges**

BUSINESS SPONSOR \$150

All Supporter Benefits, PLUS:
•Your business card in the **PMA** newsletter

PATRON \$400

All Supporter Benefits, PLUS:
•Personalized exhibit tour for you and 10 guests
•Listing of your name on the Museum's Donor Wall

COMPANY SPONSOR \$500

All Patron Benefits, PLUS:
•Your company logo in the **PMA** newsletter

BENEFACTOR \$750 +

All Patron Benefits, PLUS:
•Opportunity to be named the benefactor of a temporary exhibit or annual program

CORPORATE SPONSOR \$1,000 +

All Benefactor Benefits, PLUS:
•Your corporation's logo in the **PMA** newsletter

..... Please detach and return the portion below with your payment method.

YES! I want to join the PMA at the level of:

Name: _____

Address: _____

City/State: _____

Zip: _____ Phone: _____

Email: _____

Payment Options:

Enclosed is my check made payable to the **Petaluma Museum Association**

Charge \$ _____ to my
 Visa MasterCard

Card #: _____

Expiration: ____/____ 3-digit code: ____

Signature: _____

All membership dues are valid for one year beginning the month of enrollment and are tax deductible as provided by law.

If you prefer, you can join online at petalumamuseum.com, or call 707-778-4398

**Petaluma Museum Association
Petaluma Historical Library & Museum
20 Fourth Street
Petaluma, CA 94952-3004**



Museum Collection Update

by Solange Russek
Museum Collections Manager

New Donations



Thank you Dan Wilshusen for the wonderful donation of his great uncle Edward Helad's hand crank 1920's Bell & Howell movie camera. The collection came with the original leather case, unused film and many lenses. The camera actually works! We will display this and many of the museum's camera collection in the Joe Wayne Exhibit coming in the summer of 2018.



Thank you Brian Pace for your donation of an immaculate Park A. Van Bebber bath tub drain cover. There may have been a time where every tub in town had one!



Petaluma Museum Association
 Petaluma Historical Library & Museum
 20 Fourth St.
 Petaluma, CA 94952
 www.petalumamuseum.com

Non Profit Org
 U.S. Postage
PAID
 Petaluma, CA
 Permit No. 301

Change Service Requested

Tenth Anniversary

NEW YEARS EVE GALA

A CONCERT FEATURING THE MUSIC OF
 Bach, Schumann & More..
 with
 Pianist Elizabeth Walter
 &
 Members of the
 San Francisco Symphony
 Special Guest Appearance
 Nigel Armstrong

PETALUMA HISTORICAL
LIBRARY & MUSEUM

DECEMBER 31ST,
2018, 6-8 PM

FOR TICKETS: PETALUMAMUSEUM.COM OR 707-778-4398
 \$50 IF PURCHASED BEFORE DEC. 21, \$60 AFTER
 (ASK ABOUT BALCONY SEATING WITH ELITE BEVERAGE SERVICE)
 PRESENTED BY SKY HILL CULTURAL ALLIANCE
 & THE PETALUMA MUSEUM ASSOCIATION

For more details see our Events Schedule on pg 13