

Petaluma Historical



Library & Museum

Petaluma Museum Association

Preserving the Unique History of Petaluma and Providing
Educational and Cultural Services to the Community

Quarterly Newsletter



FALL 2013



VOLUME 23, ISSUE 4

On the Cover

Cypress Hill Cemetery

By John Benanti

THROUGH THE MAGIC of computer and photographic technology we bring you two icons of Petaluma's past. The image of George P. McNear (1857-1947) comes from a family photo taken at his home in Petaluma. He has been technologically transported to Cypress Hill cemetery where he appears in a contemporary photo in conversation with Isaac G. Wickersham (1820-1899). Wickersham is portrayed by museum member Marshall West, in proper 19th century attire, in his role as a member of the Petalumans of Yesteryear.

The cemetery was created by George's father, John A. McNear, in 1866. After the death of his first wife, Clara, John planned to bury her at Oak Hill. However, her grave filled with water and he sought a drier spot. He purchased and landscaped the property which became Cypress Hill.

What is believed to be Petaluma's first burial took place in 1851 in an undeveloped city block that today is the location of Penry Park. The next location for a town cemetery was in a location then known as Clay Hill and today is the location of two apartment houses on the southwest corner of Howard Street and Bodega Avenue. As the town grew so did the need for a larger cemetery. The Oak Hill property had been donated to Petaluma, but the man who donated it did not have proper title to it and the result was a long period of litigation before the issue was settled in 1872.

Even with the opening of Cypress Hill many citizens found their final resting place at Oak Hill because it was free. Burials at Oak Hill continued until 1878, but no records were kept of where people were buried or even what the names of the deceased were. In 1878 the state required records to be kept and names were recorded and a fee of \$3.00 was charged. After 1879 there were no further burials at Oak Hill.

There are some who contend there are still bodies in Oak Hill because families did not wish to pay the costs to have the bodies removed or some went unclaimed because there were no family members in the area.

In the early days of Petaluma's history it was not unheard of for individuals to die without family in the area or with no estate to pay for a burial. As a result a small area in the northwest part of Cypress Hill was set aside as a "potter's field" so those who were poor or without family could have a proper burial. If you would like to take a walk through Petaluma history and hear stories of Petalumans of the past join the Petaluma Historical Library and Museum sponsored cemetery tour led by Marshall West (as Isaac Wickersham) on Saturday, October 26. Call the museum, 778-4398, for further details.

*Cover photo a collaboration of Mary Rowe & Solange Russek

Petaluma Museum Association Board

Executive Officers

President: Faith Ross

Vice President: Harry Nieuwboer

Treasurer: Jodi Clinesmith

Recording Secretary: Solange Russek

Directors:

Sandra Campbell

Paula Freund

Ruth Robeson

Carol Sachal

Marilyn Thompson

Elizabeth Walter

Parks & Recreation Dept.

Don Phoenix

Recreation Music and Parks Commission

Beverly Schor, Representative

Historic and Cultural Preservation Committee

Kit Schlich, Representative

The Petaluma Museum Association Newsletter is published quarterly and distributed to our members. Many thanks to all our contributors and to our proofreaders and volunteers who help with our mailings.

If you would like to contribute any news or item of interest to our newsletter you can email to mary@petalumamuseum.com

Deadline for submission is Dec. 15, 2013

Newsletter editor: Mary Rowe

Petauma Museum Association

20 Fourth St.

Petaluma, CA 94952

President's Message

Summer Events Recap and a Look at What's Next

by Faith Ross

BY THE TIME you read this, we will be in the last quarter of this year. It's hard to believe that 2013 is almost finished. A lot has happened this year, but we still have some pretty amazing events being planned at the museum. Before I

talk about the future, let's take a brief look back at what happened this summer. July started out with a bang, our 4th of July Bell Ringing. Lots of people showed up for this annual event. Everyone had a chance to ring the bell and adjourn to the garden for cookies and lemonade. Thank you Kathy Fires, Marshall West, Bill Hammerman, Liz Cohee; and those wonderful people who made cookies. On July 11, our river exhibit, "Changing Courses – The History and Future of the Petaluma River" opened. It was a great exhibit created by community members and museum volunteers in a short period of time. Events that took place during the exhibit included an evening of poetry readings by local artist and a comedian, Dave Pokorny, told us a very funny story about his family's trip on the Russian River. If you were one of the 64 people at this event, you know how educational and entertaining it was. On August 18, John Fitzgerald and his wife Libby took over 50 people on a walking tour from the museum to the Petaluma River. John or "Fitz", as he is called, is both passionate and knowledgeable about our river. Then later that afternoon, "Fitz" teamed up with Skip Sommer to talk some more about the Petaluma River and the people who have used it.

While the river exhibit was up, our volunteers were honored at our annual Volunteer Luncheon. The volunteers at the Petaluma Historical Library and Museum are the heart and soul of the museum's operation.

Our current exhibit "Victorian Mourning Customs" is the brain child of Solange Russek and Teresa Froschl. This exhibit

includes Victorian Mourning clothing and accessories that were worn for religious, cultural or traditional purposes. Most of the articles on display are from the museum collection. Come see the exhibit and take some time to read about the customs of that era. Check our website for any events happening during this exhibit.



Upcoming Exhibits/Events

A narrated river cruise is planned for October 25 from 4:00 to 6:30 p.m., and on Saturday, October 26 at 10:30 a.m., Marshall West will lead us on a Cemetery Tour of Cypress

Hills. He and other volunteers will take on the character of some well known Petaluma personalities. Space is limited for both activities, so make reservations early. Details are on our website or you may call the office.

On November 10, one of our board members has arranged to have the Navarro Chamber Players perform at the museum. We are very fortunate to have these great musicians come to honor us with a concert.

Our next exhibit will be a holiday celebration of Christmas, Hanukah, Kwanzaa and other cultural or religious traditions that take place during the latter part of the year. The exhibit is schedule to open November 15.

We will bring in the New Year with our annual New Year's Eve Concert.

So you see, we have plans for the rest of the year. Additional information about these events will be on our website and via mailings.

I want to remind everyone of the volunteer and financial needs of the museum. We have some amazing volunteers, but we are in need of more. As this year comes to a close, please consider making a tax deductible contribution to your local museum. You should also consider giving a friend or love one the gift of a museum membership.

Regular Features

Petaluma History & Commentary:
The Centennial Year of 1876

Museum Highlights

Volunteer Spotlight

It's a Mystery

Calendar of Events

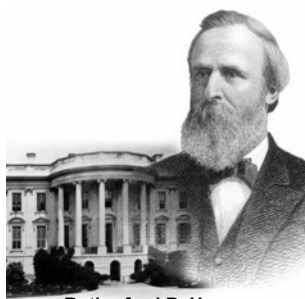
Collector's Corner

Petaluma History & Commentary

by Skip Sommer

The Centennial Year Of 1876

IN NOVEMBER OF 1876, the United States witnessed the closest presidential election in history.



Rutherford B. Hayes

Rutherford B. Hayes was the Republican nominee against Samuel Tilden, the Democrat.



Samuel Tilden

Ulysses S. Grant was the outgoing President and his administration had been rocked by scandal. The results of the voting were stunning: Tilden had won the general election, while Hayes (to the joy of Petaluma voters), had won the electoral college by ONE vote. It is still the closest election in U.S. history.

1876 was the Centennial year and Petaluma went all-out. The Petaluma Weekly Argus requested that military, fire, civic and fraternal organizations join the celebration of our Nations 100th year.

It asked: "All citizens to decorate their residences and places of business in a suitable manner, so as to make this an event never to be forgotten."

There were only 38 states in

1876, the U.S. population was 43 million and, while Petaluma had only been a city for 18 years, it was vibrant with activity.

On July 2nd, just two days prior to the Centennial, "One of the most appalling Indian massacres that has ever occurred" took place. It happened in Montana when General George Custer and his cadre of 300 men were wiped out in the battle at Little Big Horn. No one knows how many Native Americans were killed that day, because Chief Sitting Bull ordered all his dead and wounded to be immediately removed from the field.

Why had Custer so viciously attacked this camp of 4,000 men, women and children? Perhaps . . . greed. Gold had been discovered in the Black Hills and some thought that the territory "cannot be shared with the Indian". Custer's attack was heavily criticized by Major Generals Sherman and Sheridan, who called it "rashly

imprudent." It is a sad fact that, had Custer not pursued this suicidal act against the Sioux Tribe, the Native American Nation may have survived and thrived. But that day, forever labeled: "Custer's Last Stand," triggered an all-out genocide from the white man upon Native Americans.

Meanwhile, the U.S. Centennial was just two days away. In addition to the tragedy at Little Big Horn, the nation had just gone through three tough years of recession and fear and everyone wanted to change the attitude. (Sound familiar?)

In Petaluma, a huge fireworks salute termed: "The grandest ever witnessed," was held on the Washington Street Bridge on July 4th. The T.J. Hoskins store at #20 Main Street had sold "flags, firecrackers, torpedos, Roman candles and cannon" for the event.

The American Hotel Saloon sponsored a "Running Race"

in Petaluma Park and The Washoe House, out on Stony Point Road, was host to the Grand Centennial Ball that night.

Its theme:

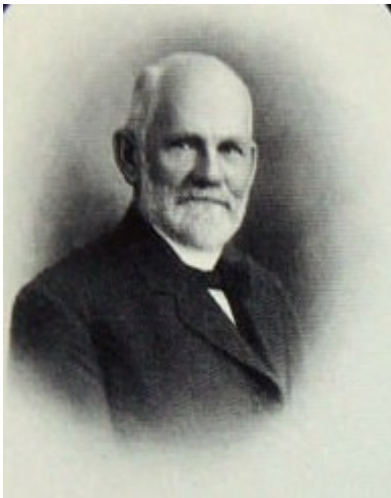
"Give vent to your Patriotism."



Washoe House Stop

In 1876 Mark Twain's *The Adventures Of Tom Sawyer* had just been published and the Transcontinental Railroad had been linking the East Coast to the West for seven exciting years. Technology and merchandise moved in both directions.

Even in those recessionary times, the money flowed. The Palace Hotel in San Francisco had opened that year and it featured indoor water closets! At the time, it was the largest and most costly hotel in the world. George Hearst purchased the San Francisco Examiner in 1876. His son, William Randolph Hearst was 13, that year.



John A. McNear

In November, John A. McNear had just installed an asphaltum floor on his huge warehouse on Petaluma Creek as the Schooner Whiting delivered 35 tons of salt there, for A.P. Whitney. From the same docks, the Steamer Vacuero would carry you from Petaluma to San Francisco for just one dollar. To get to the docks, you could purchase a buggy or wagon at the D.W.C. Putnam shop, which advertised that it was now "prepared to set tires in all kinds of weather".

As a sign of times to come, immigrants were flooding into California and local citizens had started to complain that newcomers were taking jobs away from "Americans." Most of the Asian workers went to work in the mines and on railroad construction. The average daily pay for skilled workers was \$1.50. But for child labor, it was half that.

In the fall of 1876, The Petaluma Brewery was producing "a very superior article of beer." But if your spirits still needed a lift, McGuire's Drug Store at #16 Main Street, was selling a great "blood purifier" which they said was "good for man and beast. No family should be without." It was called Lightning Linament and, of course, was mostly booze. I imagine, it could lead your concentration away from labor, recession, election and even Indian massacre woes.

To wrap-up signs of the times,

the Weekly Argus in December of 1876 had these two front-page items: "Petalumans are cautioned to beware of runaways due to hitching carelessness during the holidays."



Petaluma Horse Car line on Kentucky St.

And also this:

"A Mrs. Berger of this City, delivered a four-legged chicken to the newspaper office. Upon its death, it was preserved in alcohol and has become quite a curiosity."

(Sorry, folks, we do NOT have this item in our museum collection).



Circa 1890's Wm F. Farrell Shop

MUSEUM HIGHLIGHTS



Lucy Kortum and Evelyn Pedroni enjoying the festivities Photo by Victoria Webb

Bill Hammerman as Mr. Pepper and Faith Ross, PMA President Photo by Victoria Webb

4th of July Bell Ringing

The tradition of ringing the bell was started by Helen Putnam and continues every year. John W. Schempf and Boy Scout Troop #9 did the raising of the flag and led the audience in the pledge of allegiance. The bell ringing commenced at 11:00 a.m. with much enthusiasm from the children in attendance. Homemade cookies and lemonade were served in the Garden Court.



Changing Courses - The History and Future of the Petaluma River

On July 12 over 50 people attended the opening reception of our Petaluma River Exhibit. There was music and hot dogs and all enjoyed checking out the tule boat and other interesting details about the river. Also on July 25th **It 's All About the River** brought us an evening with seven local river writers and also a comedian. A community event, more than 50 people came for an informative and entertaining program of words.



John "Fitz" Fitzgerald talks about the river's history to a large crowd

A Walking Tour of the River and lecture at the museum happened on August 18th

The day started out with an informative tour of the river led by John Fitzgerald. Somehow Fitz was able to keep this group of over 50 people together and moving down the streets of downtown and ending at the McNear Peninsula.

Local historian, Skip Sommer gave a lively talk about the men who came to the area because of the river and used it to build the town, ranches and the industries. Some important people that were discussed were Vallejo, Donahue, Denman, Mecham, McNear, Wickersham and Baylis. Fitz, using maps and pictures talked about the history of the river and its importance to Petaluma Valley. About 35 people attended the lectures.

It was a Western themed BBQ on Aug. 14th

The newly renovated Garden Court was filled with country music and conversation for the annual volunteer luncheon. Thanks again to all our hard working volunteers who contribute their time throughout the year.



Skip Sommer & Lucy Kortum with an old Kortum campaign sign that Skip discovered and presented to Lucy.



Arielle Lehmann & Katie Whitman

MUSEUM HIGHLIGHTS

Women's Club Visits Museum

On Aug. 15th John Fitzgerald gave a private tour of the River Exhibit for the Women's Club. This was the first time new members of the club have been to the museum. We hope they will come back for other activities held here.



Janet Gracyk talks with Mary Fitzgerald about Oak Hill Park.

Oak Hill Park A neighborhood history project

Aug 14th was the day that people gathered to share their memories of the park. This project was organized by Janet Gracyk and Katherine Rinehart. Check out the article on pg. 12 for more details of the event.

Opening Reception brings many dressed in period costume.

On August 14th our newest exhibit Victorian Mourning Customs opened to the public with a reception. The concept for this exhibit was inspired by "I Do!", an exhibit in the summer of 2012 which enabled the textile department to display the clothing that has long been put away in boxes. Teresa Froschl, textile curator, Solange Russek, exhibit coordinator and Barbara Maxwell began the task of finding clothing and accessories from the Victorian era and with the help of many other volunteers their vision began to take shape. This exhibit will close on Nov. 3 so be sure to come by and check it out.



Katie Whitman, Teresa Froschl & Kathy Greene



Susan Coolidge & Barbara Harden



The Artists-Barbara Maxwell & Solange Russek paint a mural for the exhibit.



Attendees strike a somber pose. l to r, Stephen Wieser, Katie Whitman, Barbara Harden, Lisette Dana, Susan Coolidge, Kathy Greene, Jeanne Delucca, Carol Sachal, Susan McNamee



VOLUNTEER SPOTLIGHT



By Mary Rowe

Millie King

There's no place like home

Millie King was born in Petaluma almost 90 years ago. Her mother's parents were dairy ranchers from Switzerland and came here in the late 1880's. Her father delivered mail in Petaluma. His father came here from Denmark in the early 1900's and was a tailor. His mother came as a maid from Norway.

Millie attended the local schools in Petaluma and graduated in 1941. That same year the war started.

She took a secretarial course at the Luther Burbank College of Commerce in Santa Rosa and got a job working as the secretary to the Post Engineer in Hamilton Field. After the war she worked her way through the University of CA in Berkeley and earned a degree in business. She met her husband Bill there who was finishing a degree in engineering. They had fifty-five incredible years together before he died eight years ago. They had two sons who also became engineers.

Millie lived in San Jose for seven years where she earned a teaching credential. They then moved to Oregon where her husband set up the engineering department at the Oregon Institute of Technology. She taught high school there and during that time got a degree from Oregon State so she could teach at the college level. When they both retired they decided to move to Petaluma.

As a volunteer Millie has been active in the museum and the history of Petaluma. She was part of the Petalumans of Yesteryear and took on the persona of Addie Atwater. She led walking tours around town and also performed the roll of Addie for a lot of local groups. Millie has also been co-coordinator of our docents. Millie feels fortunate to be from an "old Petaluma family" because she has many relatives and long time friends to share memories with.



Pat Donegan

Past PMA Board Officer and volunteer extraordinaire

Pat has lived in Petaluma for almost 24 years after moving from San Francisco. She was the treasurer for the Petaluma Museum Association for several years. If you have ever attended one of our Christmas parties, concerts, annual luncheon or other events you would often see Pat tending bar or serving up some delicious hors d'oeuvre. Earlier that day she would have gone out to get supplies and set up the serving tables before our guests arrived.

Along with Millie she has been the docent scheduler and also gives the orientation to our new docents.

Pat remembers working at the docent desk several years ago and hearing loud noises. After listening for awhile she realized it was coming from the basement. She had forgotten that a city employee had been down there inspecting something and he got locked in. After that she never went into the basement without leaving the door open and the kickstand down.

Besides volunteering here Pat delivers Meals on Wheels every Tuesday and helps out at the Hospice Thrift Shop.



PHS student, Michael Garventa, delivers podiums by Paula Freund

Last month **Michael Garaventa**, along with his Petaluma High School Construction Technology teacher, Gene Karas, delivered six, hand constructed, solid oak, podiums to the Petaluma Historical Library & Museum. The Petaluma Museum Association had

commissioned the items to fulfill the need for furniture upon which to display exhibition literature, and close scrutiny revealed to the PMA staff and board members the high quality and beauty of the items.

Impressed with the podiums, it was decided to interview Michael to learn and record a bit of information about one of the Petaluma High School students who worked hard to create such functional, handsome objects for his community.

Michael is a native Petaluman and has attended both Casa and Petaluma High. He selected Construction Technology as his elective two years in a row. He finds the class relaxing and inspiring. He has worked with electrical wiring, sheet metal, shed and chicken coop construction and even helped with the design and creation of the Petaluma High School Butter & Egg float in 2013.

Michael sees design and construction as a hobby and plans to attend a UC system university in the fall of 2014 with the intent to study business. Michael claims to love his hometown, but wants to experience a larger city and a more cosmopolitan culture for a few years. For fun and exercise Michael enjoys competition skate boarding and is an avid member of the Sonoma Coast Skate and Surf Team. The PMA thanks Michael and the other Petaluma High School students who constructed our handsome podiums and wish them all the best in their future endeavors.

To preserve for posterity the meaningful origin of the podiums, labels were engraved by **Palmgren's Engravables** in Petaluma and attached to each podium.





STEVEN J. LAFRANCHI & ASSOCIATES, INC.
CIVIL ENGINEERS - LAND SURVEYORS - LAND PLANNERS


STEVEN J. LAFRANCHI, P.E., P.L.S.
PRESIDENT

PETALUMA THEATRE SQUARE
140 SECOND STREET • SUITE 312 • PETALUMA, CA 94952
TEL 707-762-3122 FAX 707-762-3239
steve@sjla.com

STEVE JOHN COUNTOURIOTIS

**LIEUTENANT COLONEL
UNITED STATES ARMY**

ADR



Architectural Design & Restoration, Inc.
RICK BRERETON, CHURCH HILDRETH
Principals

301 PETALUMA BLVD. SOUTH
PETALUMA, CALIFORNIA 94952
707-778-7232

www.adr-petaluma.com

CALENDAR OF EVENTS

OCTOBER

Victorian Mourning Customs

Exhibit runs through November 3, 2013

An exhibit about Victorian mourning traditions, clothing and accessories

Guided Walking Tour of Downtown Petaluma

Every Saturday -10:30 a.m., from the steps of the museum (Weather Permitting). Last tour Oct. 26

Oct. 7 – Senior Day at the Museum – A day especially for our seniors -10:30 a.m. to noon. Refreshments will be served
Volunteer Meeting - 2:00 p.m.

Oct. 14 – Museum Closed
 Columbus Day

Oct. 25 – River Cruise – 4 to 6:30 p.m. Must have reservations. Narrated by John “Fitz” Fitzgerald



River Cruise with Dolphin Tours

Oct. 26 – Cemetery Tour – Meet at Cypress Hill Cemetery at 10:15 a.m. – Tour led by Marshall West
 Reservations requested



Victorian Mourning Customs - Showing now through Nov. 3

NOVEMBER

Nov. 3

Victorian Mourning Customs Closes

Nov. 10

Navarro Chamber Players

Enjoy a night of chamber music at 7:00 pm The Navarro Chamber Players; Victor Romasevich, First Violin with the S.F. Symphony, Jill Rachuy Brindel, Cellist with the S.F. Symphony and Marilyn Thompson, Pianist will entertain with a selection from W.A. Mozart, Iosif Andriasov and Maurice Ravel.



CALENDAR OF EVENTS

Nov. 11

Veterans Day

Parade starts at 1:00 p.m. Special Seating for our members. Museum Antique Truck in parade.

Nov. 15

Winter Wonderland Exhibit

The museum will be transformed into a holiday paradise with decorated trees, doll houses, toys, trains and more.



Vietnam Veterans marching on 4th St. at the Veterans Day Parade

Dec. 27

Winter Wonderland closes

Dec. 31

New Years Eve Gala and Concert

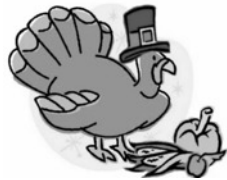
Stay tuned for more information about this popular event.



Nov. 28

Thanksgiving

Museum is closed



DECEMBER

Dec. 6

Members Holiday Party!

Come and enjoy refreshments and beverages under the dome. 5-7 p.m.



Petaluma Museum Association
Board of Directors Meeting
Second Tuesday of each month at 6:00 p.m.
Open to the Public

Volunteer and Docent Meeting
Second Monday of each month
at 2:00 p.m.

Be the first to find out about upcoming events at Your Museum!

Follow us at www.petalumamuseum.com
www.facebook.com/PetalumaMuseum
Twitter: @petalumamuseum

It's a Mystery???????????



This photo was in our archives and we have no information on it. We are hoping someone out there may be able to identify where it was taken and when. Maybe you might even recognize some of the people in the photo. Please call us at 778-4398 or email Mary@petalumamuseum.com. Please put Mystery Photo in the subject line. Thank you!



WARREN L. DRANIT
ATTORNEY AT LAW

Tel 707 524 1900 Santa Rosa
Tel 707 283 0000 Petaluma
dranit@smlaw.com

90 South E Street Suite 200
Santa Rosa CA 95404

11 Western Avenue
Petaluma CA 94952
www.smlaw.com

Petaluma residents share memories of Oak Hill Park

By Carol Sachal

About 50 people gathered in an initially foggy Oak Hill Park on Saturday, August 14, 2013 to share stories of the history of the park. Petaluma residents enthusiastically offered their knowledge of a now forgotten pond where people used to boat; of the old cemetery there where sometimes the coffins would float to the surface because of all the water; of Helen Putnam saving Oak Hill Park from being sold for a condo development; of teenagers necking in the dark of the park; of it being haunted, and many other interesting tales. It was a great event; the oldest person there was Sybil Sullivan, 95, and Susan Coolidge recounted

some stories of the area. Katherine Rinehart, who coordinated the event with Janet Gracyk, shared her book and encouraged all to speak. Laughter echoed in the great Oak Trees as one story provoked another. The group departed under the warm sun which finally came out, in synch with the illuminating history of Petaluma's Oak Hill Park.



Seated Evelyn Pedroni, Alice Rebizzo, Standing Tony Marciante, Judith Marciante, Susan Coolidge



Standing from l to r Carol Castille, Ray Hendress, Susan Coolidge, Tony & Judith Marciante Seated Evelyn Pedroni, Alice Rebizzo, Karen Howard

Anyone who may have some history and information about Oak Hill Park is welcome to write it up for the Petaluma Historical Library & Museum's research department.

Your business card here

Your business card here

Become a Business Sponsor, Company Sponsor or Corporate Sponsor and enjoy the many benefits at those membership levels.

Business Sponsors will have their cards appear in the newsletter four times a year.

Company or Corporate Sponsors will have their logo appear in the newsletter four times a year.

Please check out the membership brochure enclosed with this newsletter for more details.

Support your local museum!



Improvements made in the Garden Court this summer

by Paula Freund



The Facility Care and Maintenance Committee continued their work sprucing up the back garden. Three pots planted with thujas were installed along the south façade; five boxwood were planted outside the back door; two thujas were planted along the west side cyclone fence and two coprosma roys red were planted to plug holes in the west side oak hedge. Extensive pruning and debris removal brought in additional light to the garden and increased security and visual appeal. Extensive carpentry work was completed repairing and improving the back deck

and fencing and the city trash bins were to moved to the less visible west side. Our backyard cleanup project was completed just in time for our garden to serve as the location for several PMA events.



During the cleanup several “volunteer” palms were removed from the property and placed in pots and wooden planters. They are for sale – call the office if you are interested. They are all offspring of the beautiful date palm in the center of the back garden court.



Looking for a great way to give back to the community? Come, volunteer at the Petaluma Historical Library and Museum.

Docents – You could lead walking tours of our beautiful city or become a docent inside the museum where you would lead individuals or groups on tours of the current exhibit. You could also be one of our special docents that do tours for school children. We offer free training, you set your work schedule and you get to see all exhibits for free.

Office Helper – Help with telephone inquiries, prepare brochures/fliers and other items for mailing, work on the newsletter, other miscellaneous jobs as needed.

Library Helper - Help in our great Library with research, cataloging or customer service.

Persons with Computer skills – This could be a great opportunity for a college student with several free hours a week or a high school student who needs community service credits or anyone in the community who wants to help. We need your help if you have strong database/computer skills and would like to share this knowledge.

Persons with Carpentry Skills – Help us build our exhibits.

Interested in Helping at Concerts or Other Events - We need people to help with set up and clean up, ticket takers and servers. What a great way to attend an event for free!

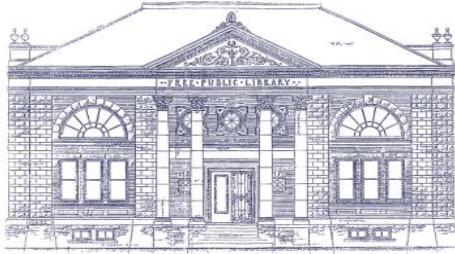
Persons with Graphic Design/Photography /Artistic Skills– If your interest is photography, graphic design or you have artistic skills, we could use your expertise at the museum putting together our exhibits and publicity.

Are you a grant writer? We could use you at the museum.

Love working with **textiles**, or repairing fabric items, statues – We could use you at the museum.

Don't know how you could help, but you have some free time, give us a call. There is so much to do at the museum and it's a fun place to hang out. Call 778-4398

Treasurer's Report



PETALUMA MUSEUM ASSOCIATION
PETALUMA HISTORICAL LIBRARY & MUSEUM
 20 FOURTH STREET
 PETALUMA, CALIFORNIA 94952 - 3004
 707-778-4398 *petalumamuseum.com*

Contact: Faith Ross, PMA President
 Phone: 707-778-4398

FOR IMMEDIATE RELEASE

FINANCIAL RESULTS OF THE PETALUMA MUSEUM ASSOCIATION

The Board of the Petaluma Museum Association is pleased to announce the financial results for the fiscal year ending June 30th, 2013. The Board is especially proud of the turnaround from a deficit position to a modest surplus.

STATEMENT OF ACTIVITIES

Year Ended	6/30/2013	6/30/2012
Net Program Contribution	16,409	-4,271
General Operating Expenses	-43,125	-43,009
Net Fundraising Contribution	25,694	16,386
Net Assets Released from Restrictions	4,741	3,062
Surplus/-Deficit	3,718	-27,832

The Petaluma Museum Association Board of Directors are working on exciting exhibits and programs for not only the current fiscal year (2013-2014), but looking forward to the 2014/2015 year with great anticipation of being financially solvent and continuing to provide educational and entertaining activities at the museum

Thanks to all our hard working volunteers who make the operation of the museum possible!

###

Membership

NEW MEMBERS

Gary & Deborah Collins, Geri Digiorno, Stephen & Fiona Hamilton, Sarah James, Jude Mion, Chris Riebli, Janice Cader Thompson, Nora Wilkins

RENEWALS

Richard Altman, Virginia Anderson, Mary Ball, Oralee Bean, Mary Beene, Christa Bechler
 Gladys Bien, Charmaine Burdell, Dennis & Carolyn Buss, Ruth Browning & Karl Scheuermann
 Lynn Cominsky, Carola DeRooy, Pat Donegan, Prudence Draper & Family, Meg Ensign, Chalet Florist
 Anita Gajewski, Marilyn Gambonini, Karin Gjording, Clinton Grove, Helen Hagopian
 Ray & Pat Handyside, Carl Iverson, Carol & Jim Janakes, Homer Johnstone, Stephan Jensen, Jan Klebe
 Lynn & Thom Knudson, Lisle Lee & Dan Brown, Janice Lee, Bruce & Gerry Lewis, Carolyn Mack
 Elizabeth Marquardt, Marjorie Miller, Kathy Nagel, John O. Nelson, Joe Noriel, Wally Noriel
 Judy Nyman, Harlan Osborne, Lois Pasini, Jo Ann Ritko Pozzi, Maureen Friedrichsen-Reed, Rich &
 Susan Rodkin, Susan Roffmann/St. Vincent Academy, Ken & Mary Rowe, Donald Scott, Loretta Stoddard,
 La Verne & Richard Stout, Dr. & Mrs. David Strange, Marilyn Thompson, Brian & Joyce Tolson, Pamela
 Torliatt, Carol Weisker

DONATIONS

James & Liz Cohee
 Harry Nieuwboer

Thank you for
 your support!

In Memory of:

Ken Conley

LIFETIME MEMBERS

Linda Adams & Ken Larson, Mr. & Mrs. Marv Ashman, Ron Bausman & Art Wagner, Jim Becker, Ann &
 Gordon Blumenfeld, Walter & Marilyn Bragdon, Tom & Kathy Brandal Virginia Breedlove, Arthur & Selma
 Cader, Coddington Foundation, Clark & Susan Coolidge, James and Liz Cohee, John Cota & Teresa Barrett,
 Jack Dei, Sr., Angela E. De Carli, Daniel & Elissa DeCaro & Family, Marvin & Shirley Dolowitz, Diane
 Dorfman, Karen & James Ely, June Ferguson, Bonna & George Flynn, C. Michael Forrest, Alice &
 Donald Forsyth, Jim & Kris Foster, Kathy & Richard Fries & Family, George & Margaret Gambonini &
 Family, Cheryl & Derlin German, Ken & Annette Goltermann Family, Margaret Gossett, Alice
 Guglielmetti, Bill & Connie Hammerman, Ann Hobrecht, Miriam Hodge, Gary & Lynn Imm, Carol Isaak,
 Toby Kaehler, Steve & Karen Kemmerle, Mildred King, Bill & Lucy Kortum, Jack & Verna Krout, Rollie &
 Shirley Leeburg, Catherine & Theodore Lehmann, Paul & Marlene Lewis, Blanch Lieb, Sid & Gerry
 Lipton, Constance Mahoney, Amy Malaise & Gary Fusco, Peter Masi/Master Cleaners, Charles & Evelyn
 Matteri, Shirley B. McDonald, Mc Dowell Drug Task Force, James & Sue Mc Isaac, Keith & Debbie
 McNeil, Robert & Virginia Merwin, Max Mickelsen, Pierre & Sonja Miremont, Tim & Lori Nelson,
 Tammara Norman & Edwin Hamilton, Ross Parkerson, Edward & Barbara Peterson, Ray & Ettamarie
 Peterson, Charles & Mary Pheil, Russel Pleech, Shep & Velma Porter, Lawrence Reed, Ed & Bernadette
 Ricci, Tim & Deborah Riddle, Katherine & William Rinehart, Walter & Emily Roeder, Rotary Club of
 Petaluma, Jerry & Mary-dee Roy, Gloria Salick, Nancy Sasser, Richard & Lucille Sharke, Shep & Lou
 Shepherd, Alba Silva, Skip Sommer, Springfield Place, Clarice Stasz, Thomas & Mary Stelzner, Barbara
 Tornberg, UBS Financial Services, Gene & Lenore Urbain, Vietnam Veterans of America, Chapter 563,
 Michael & Elaine Von der Porten, Marcie Waldron, Ruth Walker, Ron & Judy Walters, Margery Wolf,
 Sarah Young, Scott & Meredith Young, Nick Zaillian

JOIN OR RENEW - It's Easy to Do

1. Visit our website, petalumamuseum.com, complete the membership form and make a PayPal, Visa or Mastercard payment
2. Complete the attached form, pay with Visa or Mastercard or enclose your check made payable to the **Petaluma Museum Association** and mail it to our address on the payment form
3. Call the **PMA** office at (707) 778-4398 Monday through Friday, between 10:00 AM and 3:00 PM, and pay with your Visa or MasterCard.

ADDITIONAL WAYS TO SUPPORT THE PMA

Volunteer - the PMA welcomes and sincerely appreciates members who can dedicate their time and energy
 Give the gift of membership - the cost will be discounted 10%
 Be a "Legacy Donor" - the PMA is delighted to offer naming opportunities to those giving "Leadership Gifts"

MEMBERSHIP BENEFITS & CATEGORIES

BASIC BENEFITS OF ALL MEMBERSHIP CATEGORIES:

- Discounted admission to temporary exhibits
(admission to the library & permanent exhibits is free to all)
- Personalized membership card
- Reserved seating at the Butter & Egg Parade
- 10% off Museum store merchandise
- Subscription to and acknowledgement in the PMA newsletter
- 10% off gift memberships
- Invitations to previews & receptions

INDIVIDUAL \$35
 All Basic Benefits
 (\$20 memberships are available in this category to: Seniors, Educators, Students. Military is free)

FAMILY / DUAL \$70
 All Basic Benefits, PLUS:
 •Extension of Basic Benefits to an additional adult & children in the same household up to age 17
 •Two personalized membership cards

RECIPROCAL MUSEUM MEMBERSHIP PRIVILEGES - "Museum Goer" Benefit

If you join the PMA at the Supporter level (\$125) or higher, you will receive free or discounted admission to more than 600 museums in the U.S. Some of the top Bay Area participating museums are:

Asian Art Museum • Walt Disney Family Museum • de Young Museum • Legion of Honor
 CA Historical Society Museum • Charles M. Schulz Museum • Sonoma County Museum

SUPPORTER \$125
 All Family / Dual Benefits, PLUS:
 •Reciprocal Museum Membership Privileges

BUSINESS SPONSOR \$150
 All Supporter Benefits, PLUS:
 •Your business card in the PMA newsletter

PATRON \$400
 All Supporter Benefits, PLUS:
 •Personalized exhibit tour for you and 10 guests
 •Listing of your name on the Museum's Donor Wall

COMPANY SPONSOR \$500
 All Patron Benefits, PLUS:
 •Your company logo in the PMA newsletter

BENEFACTOR \$750 +
 All Patron Benefits, PLUS:
 •Opportunity to be named the benefactor of a temporary exhibit or annual program

CORPORATE SPONSOR \$1,000 +
 All Benefactor Benefits, PLUS:
 •Your corporation's logo in the PMA newsletter

All membership dues are valid one year beginning the month of enrollment and are tax deductible as provided by law.

YOUR ANNUAL MEMBERSHIP DUES WILL SUPPORT

THE PROGRAM OF PUBLIC SERVICE

- Educational Exhibits
- The Public School Tour Program
- Inspiring Concerts
- The Docent Program
- Engaging Lectures

THE ACCESSION and PRESERVATION of our community's priceless historic artifacts

HOPPY HOPKINS RESEARCH LIBRARY where Petaluma's historic documents are preserved and available to the public



Photos courtesy of Mary Rowe



Payment Options:

- Enclosed is my check made payable to the Petaluma Museum Association
- Charge \$ _____ to my
 - Visa MasterCard

Card #: _____

Expiration Date: _____

Signature: _____

Member Options:

- I am interested in volunteering.
- I am interested in becoming a "Legacy Donor."
- I am interested in including the PMA in my Charitable Trust.
- Enclosed is my additional donation of \$ _____.

Petaluma Museum Association
 Petaluma Historical Library & Museum
 20 Fourth Street
 Petaluma, CA 94952-3004

If you prefer, you can register your membership online at petalumamuseum.com, or call 707-778-4398

PETALUMA MUSEUM ASSOCIATION
 Membership Categories

- Individual \$35
 - Senior, Educator, Student \$20. Military free
 - Family / Dual \$70
 - Supporter \$125 *
 - Patron \$400 *
 - Benefactor \$750 + *
 - Business Sponsor \$150 *
 - Company Sponsor \$500 *
 - Corporate Sponsor \$1,000 + *
- * Reciprocal Museum Membership Levels

I want to Initiate a PMA membership

I want to renew a PMA membership

Name: _____

Address: _____

City/State: _____

Zip: _____

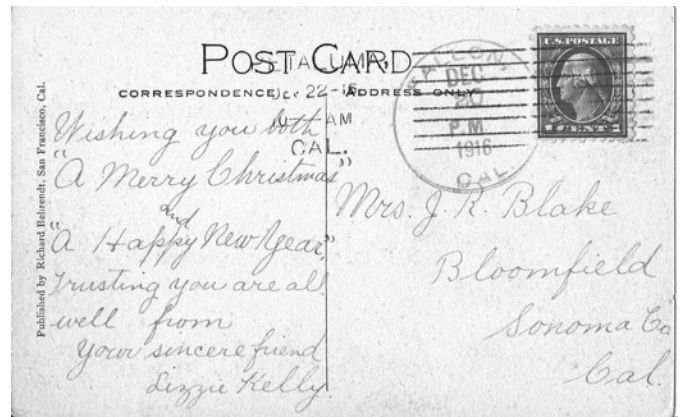
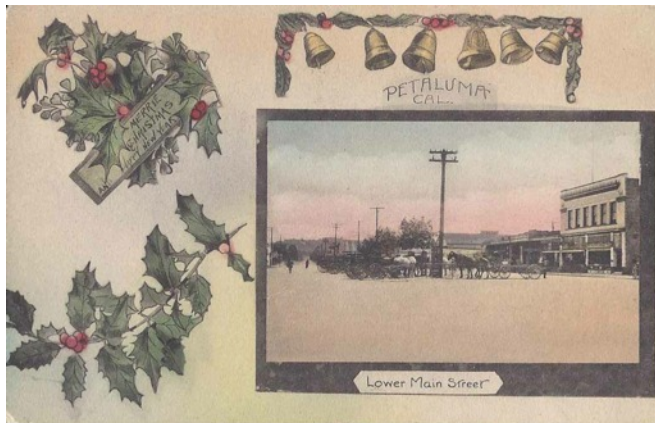
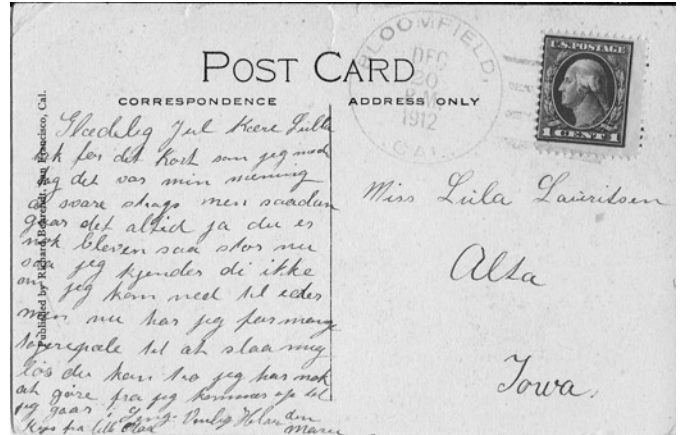
Phone: _____

Email: _____

COLLECTOR'S CORNER

From the Dan Brown Collection

Two Petaluma Christmas postcards published by Richard Behrendt of San Francisco. One was mailed from Bloomfield on Dec. 20, 1912. The other was mailed to Bloomfield from Fallon on December 20, 1916.



Petaluma Christmas themed trade card from S. H. Mauzy, Boot and Shoe Store. Business was listed in the Petaluma City Directory in 1884 & 1886. It was not listed in our 1878 or 1895 Directory. The store was located at 41 Main and was between Kent & West St. on today's Petaluma Blvd. N. The building is no longer there. Silas H. Mauzy lived on 502 Western. That building is also gone.

PETALUMA MUSEUM ASSOCIATION
Petaluma Historical Library & Museum
20 Fourth Street, Petaluma, CA 94952
707-778-4398 FAX: 707-762-3923
www.petalumamuseum.com

Non Profit Org
U.S. Postage
PAID
Petaluma, CA
Permit No. 301



Current exhibit - Victorian Mourning Customs - Sept. 13- Nov. 3
(Background mural by Barbara Maxwell & Solange Russek)