



Petaluma Historical
Library & Museum

Petaluma Museum Association

Preserving the Unique History of Petaluma and Providing
Educational and Cultural Services to the Community

Quarterly Newsletter



Portraits of Petaluma Pioneers

A PMA Exhibit
June 10 - Sept. 24

Spring/Summer 2017

Volume 27, Issue 2

On the Cover

A Masterpiece Portrait from the PMA's Upcoming Exhibit, "Portraits of Petaluma Pioneers"



Photographer: Lewis Dowe (b. 1838, active in Petaluma 1877 to 1880)

Sitters: Betsy Elizabeth Williams (born 1792 Woolwich, Maine; died 1882 Petaluma, CA) & Clara McNear (married name, Leppo, born Petaluma, CA 1881; died Tiburon, CA 1979)

Date: 1881

Photographic Format: enlarged reprint of original cabinet card
PHL&M Early Portrait Collection

This elderly woman and the baby she holds represent two of Petaluma's earliest, prominent Petaluma pioneer families. Betsy Elizabeth Williams, shown here holding her great-great granddaughter with gentle firmness, was the mother of George Bailey Williams, a man instrumental in the early development and construction of Petaluma hotels, homes and its first school. It is not known when Betsy traveled to Petaluma from her home in Maine, but she died in Petaluma in 1882. George can be credited with bringing the esteemed McNear family to Petaluma when in 1856 he encouraged his daughter, Clara Williams McNear, and her husband, John A. McNear, to join him in Petaluma. Clara Williams McNear died at age 29 and the baby portrayed here is her namesake granddaughter; Clara senior's only child to survive to adulthood, George Plummer McNear, named his first child in honor of his mother.

This portrait was a fortunate coincidence: it was created in the year the photographer departed Petaluma; two years before Betsy's death; and five months after Clara's birth. In both its content and composition this is a masterpiece of portrait photography. The juxtaposition of old and young, dark and light, bold and fragile attracts and delights the eye. There are no peripheral objects to distract the viewer and the arched mat adds to the dignity of the scene. The photographer has skillfully isolated and captured a moment of calm repose possessed simultaneously by both sitters. It represents a precious moment in time and a significant relationship in Petaluma history.

jpgf, 2017

Petaluma Museum Association Board

Executive Officers

President: Harry Nieuwboer

Vice President: John Crowley

Treasurer: Erica Barlas, CPA

Recording Secretary: TBD

Directors:

Debbie Countouriotis

Angela Escudero

Kathy Fries

Rob Girolo

Kate Hawker

Sarah Jochumson

Dianne Ledou

John Praetzel

Freyda Ravitz

Elizabeth Walter

Marshall West

Parks & Recreation Dept.

Drew Halter

Recreation Music and Parks Commission

Dave Alden, Representative

Historic and Cultural Preservation Committee

Kit Schlich, Representative

Liz Cohee, **Museum Coordinator**

The Petaluma Museum Association Newsletter is published quarterly and distributed to our members. Many thanks to all our contributors and to our proofreaders and volunteers who help with our mailings.

If you would like to contribute any news or item of interest to our newsletter you can email to mary@petalumamuseum.com

Deadline for submission is July 1, 2017

Newsletter editor: Mary Rowe

Petaluma Museum Association
20 Fourth St.
Petaluma, CA 94952



President's Message

Hi Folks,

There are a number of activities for your attention this Spring:

The search for a first ever Executive Director is moving as planned. We have appointed a special committee to interview and recommend applicants, established a uniform process for interviews and received twenty applications, a substantial number of which appear promising. Interviews will begin soon and we hope to meet our goal of appointment by the end of the fiscal year.

The hiring of the right executive director should enhance the goals of the PMA by eliminating the "re-invention of the wheel" inherent in volunteer management, establish a closer relationship with you, our supporters and donors, and improve our effectiveness in fulfilling our goals of preservation and cultural support.

The annual general meeting of the PMA is coming up in June. You will be presented with two important proposals for change to our bylaws:

1. With the hiring of an executive director the role of the president and officers will change. At present the president and officers are elected by the whole membership and the president acts as both leader and executive director of the PMA. With a professional executive director in place the president will need to focus on consolidating the will of the board and directing the executive director's activities. (We don't want the ED and president in competition regarding the daily operation of the PMA.)

To accommodate this your Board recommends a change to the bylaws replacing the "President of the PMA" with "President of the Board of the PMA" making the president elected by and more responsible to the board and eliminating the executive direction responsibility of the president. Similarly, the Vice President, Treasurer and Secretary would be elected by the Board. This provides a flexibility we will need in the future as your Museum and the PMA effectively employ an executive director and assume a larger role in the community.

2. In the past several years, while a small minority of you have voted by mail, the attendance at general meetings has consisted of some board members, newly elected directors and only a handful of members. This is hardly the social event you are entitled to, where you can enjoy meeting with other members and discuss the well-being of your museum. In December we hold the Member's Holiday Party, where you do meet and enjoy the conviviality of many members.

Your board recommends that we change the date of the General Meeting and Election to coincide with the Member's Holiday Party in December. The process leading to elections would remain as it is but shift six months to support December elections, and newly elected board members would have time to become familiar with the complexities of our museum operations and consider potential improvements before they assume office at the beginning of the fiscal year, as they do now.

I strongly recommend approval of these two changes to our bylaws. A self-mailing ballot is enclosed in this newsletter. I wish you a happy and productive summer.

Harry

Regular Features

Petaluma
History &
Commentary:

Petaluma Pioneer
Isaac Wickersham

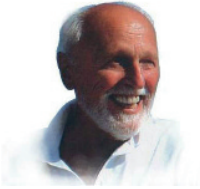
Museum
Highlights

Volunteer
Spotlight

Program of Public
Service (insert)

Museum
Collection Update

Historical News
of Petaluma



Petaluma History & Commentary by Skip Sommer

PETALUMA PIONEER I. G. WICKERSHAM

ISAAC WICKERSHAM ARRIVED in Petaluma in 1853 as a 33-year-old lawyer with great ambition. He had done well in the gold fields and had heard about the verdant Petaluma Valley with a river running through it, just north of San Francisco Bay.

He brought with him a herd of cattle (purchased in Sacramento) and the first mowing machine ever in Sonoma County. That initial year, Isaac cut over 300 tons of hay for resident ranchers to ship down-creek to San Francisco Bay. That being enough of hard physical work, Mr. Wickersham sold the cattle and the mowing machine the following year.

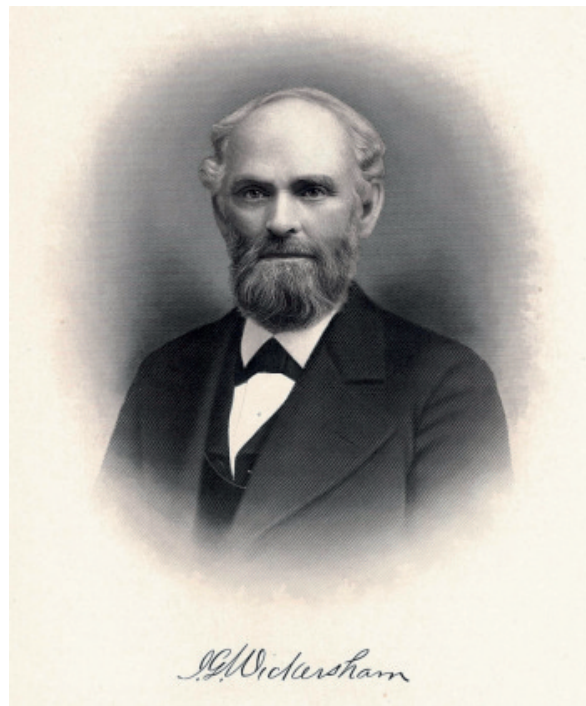
The mowing machine had been a great introduction to Petaluma for Isaac, and he made friends quickly as a result, opening his law office on Main Street in late 1854. (Now the location of Seared restaurant.) By 1855, Wickersham had been elected District Attorney and had also began the practice of lending money. In 1857, he returned East to marry his childhood sweetheart, Lydia Rickett, and brought her back to Petaluma. Later that year, he purchased a lot on the NW corner of Sixth and D Streets and began constructing there a fine home for Lydia.

Isaac soon found that he enjoyed the money-lending business more than the practice of law, and in 1865 he opened the first bank in Sonoma County: The I. G. Wickersham & Company Private Bank. Just two years later, he erected the first bank building in Petaluma on the corner of Main and Washington Streets.

Banking was booming for Wickersham, and by 1874 the bank's name had been changed to The First National Bank of Petaluma. Along the way, Isaac also became involved in the founding of railroads with mill owner John McNear. These included, first, the horse-driven Petaluma Street RR, then the Petaluma and Healdsburg RR in 1865 and the Sonoma and Marin RR in 1876. Unfortunately, these lines didn't flourish fast enough for the two dynamic capitalists and

were sold-off to consolidate with other existing RR lines.

But, never one to shirk responsibility, Wickersham was quite active in civic affairs, and headed the efforts to bring public sewerage and electric lights to Petaluma. He was also a member of the Vestry of St. John's Episcopal Church and donated the lot upon which it





Wickersham Building on 170 Petaluma Blvd N.

stands. As a member of the board for the Sonoma and Marin Agricultural Society, Isaac kept his hand in the dealings of the ranchers of the county, many of whom had borrowed funds from his bank.

Isaac and Lydia had six children in the home on D Street. Two tragically died in infancy and two more before the age of 40. One of his two surviving children, Lizzie, married Sonoma County Veterinarian Thomas MaClay in 1901. Lizzie MaClay, who in 1899 had inherited the beautiful Wickersham home on D Street, had it demolished, and hired famed San Francisco architect, Albert Farr, to build the Spanish Revival mansion that stands there still. Interestingly, veterinarian Thomas MaClay later became President of the I.G. Wickersham Banking Co.

Isaac Wickersham died in 1899 and his obituary in the Petaluma Daily Courier was headlined:

“Pioneer banker and capitalist leaves largest estate ever recorded in Sonoma County history.” That day’s editorial stated that; *“No man will be more greatly missed in this community.”*

He had been one of Petaluma’s *Big Six Founding Fathers* and had left many legacies in our community.

The Wickersham funeral service was formally addressed by Petaluma Professor E.S. Lippitt and the pallbearers included these Petalumans: Professor Lippitt, H.T. Fairbanks, G.P. McNear, William Hill and L.G. Nay. He was buried in the family plot in Oak Hill Cemetery. Petaluma’s Wickersham Park was donated to the City by his daughter, Lizzie MaClay, and named for her father.

The Portraits of Petaluma Pioneers

A Three-Part Project: Accessioning, Digitizing & Exhibiting
by Paula Freund

SINCE THE PUBLICATION of Peter Palmquist's *Pioneer Photographers of the Far West* in 2000 by Stanford University Press, the world of art history has been taking notice of the beauty and historical importance of 19th century portrait photographs. The most prominent display of the trend is the Smithsonian National Portrait Gallery's long running exhibit, "Lincoln's Contemporaries." Inspired by this exhibition and its scholarship, the Petaluma Museum Association took stock of the PHL&M's early portrait collection and realized what treasures had been resting in their offsite storage boxes. The desire to exhibit the portraits was immediate; however, it was clear that first they needed to be cared for and, if the project was to be done according to 21st century standards, they needed to be available on the internet.

The Petaluma Historical Library & Museum's early portrait collection had been neglected; consequently,

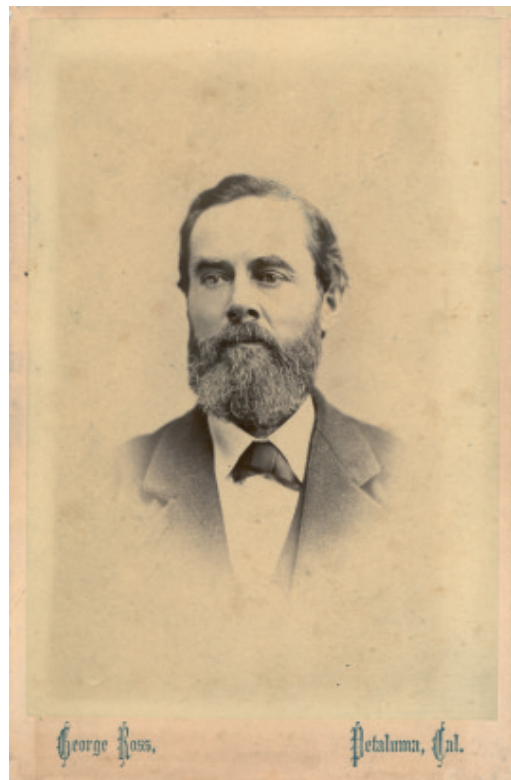


as a first step, the Petaluma Museum Association hired Caroline Costarella, a recent graduate from the San Francisco State University's master program in history, to properly accession, digitize, conserve and store all 400+ images. The PMA is happy to report that Caroline quickly and professionally finalized the task and has since been working in Washington D. C. as an intern at the National Portrait Gallery.

The records and digitized images of the portraits were then placed on a website, petalumapioneers.org, by Web Developer, Martin Ferrini, with the assistance of Rita Sorpranith. The website was specifically designed to serve as a public archive which is searchable by photographer as well as sitter. It also contains links to other collections containing early Petaluma portraits, an extensive bibliography and an audio tour for the culminating achievement of the

project, "Portraits of Petaluma Pioneers, Personal Images & Public Stories of a California Rivertown," an exhibit scheduled to run from June 10 to September 24, 2017 at the Petaluma Historical Library & Museum.

Research for the exhibit quickly revealed that Petaluma was a favorite location for entrepreneurial photographers: during the second half of the 19th century, our small, booming, frontier, rivertown was home to over 20 photography studios. Petaluma's pioneers took full advantage of the services offered, preserving for us the opportunity to observe their faces and demeanor in rich, intimate detail and connect them to the stories of their accomplishments and to the history of Petaluma. Scrutiny of the portraits revealed many mini masterpieces especially among the work of Bryan R. Johnson (active Petaluma, c. 1863-1867) and George Ross (active in Petaluma 1862-1893). Both were exceptionally skilled portraitists and their work will be featured in the exhibit.



Albion Whitney, cabinet card taken by George Ross, 1870's



*Susan Whitney, cabinet card taken
by Lewis Dowe, 1877 - 1880*

To compliment the portraits, there will be on display a collection of early celluloid photo albums, Victorian graphoscopes and stereoscopes and selections from the PHL&M's extensive textile collection. Educational videos courtesy of the George Eastman Museum will explain the early development of photography, and a reading table will be available where visitors will have access to copies of the original documents that officially incorporated the city in 1858 and access to primary documents written by Petaluma pioneers including overland journals, and diaries of everyday life.

Events scheduled to compliment the exhibit include: a presentation by the author of the definitive account of Petaluma history, Adair Lara, June 25, 2 to 3:30; the official unveiling by Mayor Glass of the City of Petaluma's 1858 incorporation documents at Petaluma's traditional July 4th Bell Ringing Ceremony; a presentation by Paula Freund, the exhibit's curator, July 15, 2 to 3:30; a lecture by public historian, Arielle Lehman, on the importance of the incorporation documents, August 5, 2 to 3:30; a presentation by the Sonoma County Genealogical Society, August 19, noon to 2:30; a presentation by Gawain Weaver on conserving vintage family photographs, September 2, 2 to 3:30; and a lecture by

Santa Rosa historian, Jeff Elliott, on three crises in early Petaluma history, September 23, 2 to 3:30.

A wine & cheese opening reception has been scheduled for June 10, 5 to 8:00. This will be a joint reception with the Petaluma Arts Center that will also be celebrating their correlating, contemporary exhibit, "The Face of Petaluma." Transportation between the venues will be provided. The Petaluma Museum Association's annual fundraiser will be themed to compliment the exhibit and held at the Hotel Petaluma on June 17th.

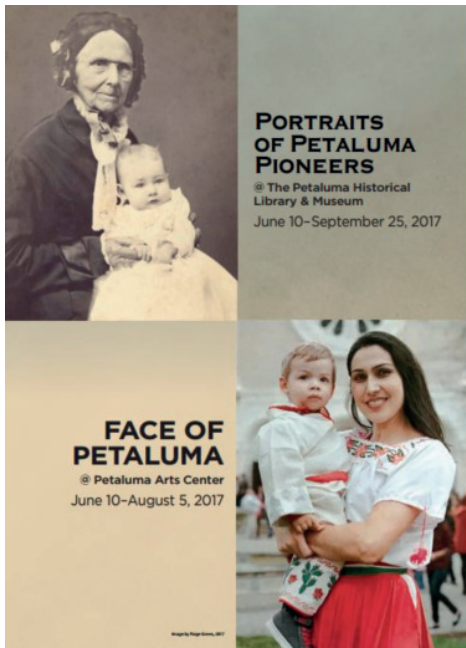
All three parts of the "Portraits of Petaluma Pioneers" project have been funded anonymously by a patron of the Petaluma Museum Association and created by its staff and volunteers with inspiration and assistance from the Sonoma County Library, the Bancroft Library, the California Historical Society and the Society of California Pioneers.

19th Century Photographer's Studio

The visitors to the "Portraits of Petaluma Pioneers" exhibit will be able to experience the interior of a 19th century photographer's studio thanks to the generosity of David Silver, President of the International Photographic Historical Organization. Mr. Silver, whose collection of vintage photographica is renowned, created a similar display for the Oakland Museum, and his display for the PHL&M will be housed in the Victorian parlor.

Thanks to both the kindness and talent of Barbara Maxwell, the PMA's artist-in-residence and her assistants Solange Russek and Michael Lanham, her near life-sized reproduction of the façade of George Ross' Petaluma photography gallery will hang outside the parlor creating a complete experience for the exhibits' visitors. Her rendition will be based on the carte de visite dating from 1868 and owned by the Beinecke Library at Yale University illustrated on the back cover.





OPENING RECEPTIONS

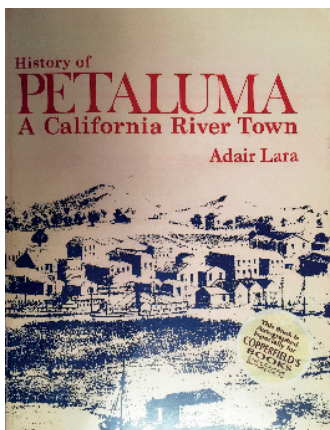
PETALUMA HISTORICAL LIBRARY & MUSEUM
&
THE PETALUMA ARTS CENTER

A CELEBRATION OF COMPANION PORTRAIT EXHIBITS

Saturday, June 10, 5 to 8pm

Wine & Cheese

Transportation provided between venues

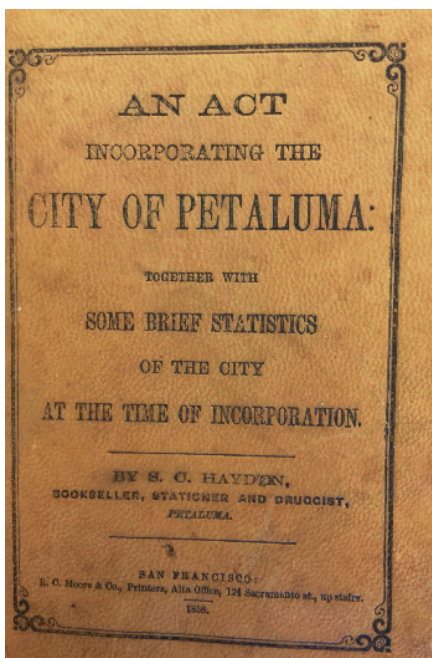


Sunday, June 25

Beginning at 2:00 at the PHL&M, Adair Lara will discuss the creation and content of her book, History of Petaluma, A California Rivertown. Published in 1982, this is the definitive book on the history of our community. Don't miss this opportunity to learn more about Petaluma history and to pick up a copy which belongs on every Petalumans' bookshelf.

Tuesday, July 4th

At the Annual July Fourth Bell Ringing Ceremony this year, our own Mayor Glass will unveil the founding Incorporation Documents of the City of Petaluma. Our early pioneer residents created these documents in 1858 in an attempt to civilize a frontier town. It was thought the original documents were in our own city hall, but after a bit of sleuthing, they were found in the State Archives in Sacramento.



A display of these documents will be part of the upcoming "Portraits of Petaluma Pioneers" exhibit and a lecture explaining their importance to the history of our town will be presented by public historian, Arielle Lehmann, on August 5 at the PHL&M from 2 to 3:30.

MUSEUM HIGHLIGHTS

TWO GREAT MONTHS AT THE MUSEUM Black History Month and Women's History Month by Faith Ross



Faith Ross speaking at the Tea. Photo by Jim Johnson

This year's theme for Black History Month was "Black Athletes, their challenges, triumphs, and impact on American Culture." The exhibition at the museum profiled over 25 athletes that have had a positive impact on American culture through their involvement in a sport. Bubba Paris, a retired San Francisco 49er, was our keynote speaker at our

annual Black History Program. He talked about some of his challenges as a child (being big and being bullied by other children) and how he overcame them.

The month long activities were kicked off with our 5th Annual Jazz Concert at the museum featuring Dorian Mode. As normal, the concert was sold out. Thank you Dorian Bartley (vocal/Bass), Bob Johns (Piano/Cornet), Dave Scott (Sax) and Tony Blake (percussion).

A special thank you to all the people who loaned us items for the exhibit including our own Kit Schlich. The Black History exhibit came down and Women's History went up for March. Our exhibit included some

wonderful copies of Suffragette Postcards loaned to us by Jessica Toy and our collage of women who have made a difference in Sonoma County. The month ended with a beautiful Afternoon Tea at the Petaluma Woman's Club. Thank you to the Petaluma American Association of University Women (AAUW), The Petaluma Woman's Club and the Sonoma County Commission on the Status of Women for co-sponsoring these activities.



Thank you to the waiters for the Afternoon Tea at the Woman's Club. From left to right, Clint Gilbert, Michael Lanham, Warren Ross, Phil Sustaita and Joel Allen Jr. photo credit Jim Johnson



Women's History Month concluded with a wonderful concert and lecture about the life of Alma Mahler, Viennese-born composer and revolutionary for her time who was an associate of key influencers of the

arts community ca 1902. Kayleen Asbo, music historian brought Alma's story to life along with performances by Karen Clark, contralto and Karen Rosenak, pianist.



A Call to Arms: World War I: A Petaluma Perspective

Opening with a reception on April 2 this exhibit was curated by Jane & Jessica Toy and showcased information and many artifacts from their WWI collection. The photo you see pictured on your left focused on the Petaluma men and women who served their country abroad. Movies and lectures were presented every Sunday. This exhibit will end on May 21.

VOLUNTEER SPOTLIGHT

by Mary Rowe



Jeanne DeLuca



Jeanne was born in San Francisco and spent her childhood and high school years there. Her parents were both from Pennsylvania. Her dad was a coal miner and moved to San Francisco when he was twenty looking for a better life. He told her he wanted to get away from a town

where there were always a lot of deaths from working in the coal mines. Once he settled in San Francisco he sent for his soon-to-be wife.

Jeanne has many fond memories of growing up in the city. They lived in the Sunset district and were just a few short blocks from Golden Gate Park. Back in the early 1950's children roamed the city unchaperoned and it was always an adventure, be it exploring Golden Gate Park, swimming at Ocean Beach, playing the arcades at Playland-at-the-Beach or going to the Cliff House. Admission to the San Francisco Zoo was free back then. The only fees were for the carousel and the train. Stow Lake, Japanese Tea Garden, museums and aquarium were also hang outs. You could hop on a street car for only 5 cents and Jeanne and her friends from grade school would spend all day seeking new adventures.

When she graduated from high school she married and moved to Daly City. She said after having

lived in San Francisco where the houses are so close together she was excited to have the space between houses. Jeanne worked for 17 years as the manager of a veterinary hospital.

She moved to Petaluma in 1991. I asked her why Petaluma and she said her family took a vacation to the river in Rio Nido every year and they would pass through Petaluma. She remembered thinking "*One day I will move here*". She said she has fondness for anything chicken related.

Jeanne got a job working for the Sonoma County Assessor and remained there until 2008 when she retired. She wanted more time to spend with her seven grandchildren.

Jeanne started volunteering at the museum in 2008 after her friend Faith Ross asked if she would like to help set up the Black History Exhibit. She soon found herself helping out with many other exhibits and events held at the museum. One of her favorites was the Elvis Exhibit in which she loaned many items from her collection. She has also loaned items from her collection for the Black History Exhibits and Winter Wonderland. She also became a desk docent. You may have seen Jeanne working at the Scotch Tastings or helping with our Annual Holiday Party and the Women's Afternoon Tea held during Women's History Month. Besides being an invaluable volunteer for the museum she also finds time to be an usher for Spreckels Theater and participates in the annual rummage sale for Pet Pals.



**PMA Spring
Volunteer Work Day
Saturday
June 3, 9:30am - 1:00pm**

WE INVITE YOU to join us for our upcoming spring work day on Saturday, June 3rd. We have a variety of cleaning and landscaping projects planned in order to prepare our museum for the summer season; including, painting, cleaning, trash pickup, and an assortment of garden tasks. With your assistance, we can

ensure that our museum and grounds look their best as we move into the summer season.

We'll be starting at 9:30 am and plan to work until 1:00 pm, and we invite you to come and help out for whatever amount of time you are able. Work clothes and garden gloves are recommended. Pastries and refreshments provided.

Thank you.

PLEASE RSVP mary@petalumamuseum.com or call 778-4398.



News from Heritage Homes & Landmarks

Nominations for 2017 Preservation Awards Eagerly Sought

Every two years HH&L recognizes the efforts and confers awards to those individuals who have spent time and treasure restoring Petaluma's heritage buildings. Have you completed work on the exterior of your historic home or commercial building? Do you know someone who has? If so, go to www.petalumamuseum.com for a nomination form, fill it out and return it to the address noted on the form. **The nomination deadline is June 1, 2017.** Work must have been completed between July 1, 2015, and June 30, 2017. Awards will be presented at a ceremony on October 1.

Decorated "Parlours" to Shine for the Holidays

Reminder: HH&L is looking for homes for the Holiday Parlour Tour on the evening of December 3. Rooms showcased on the tour usually include living room, dining room and kitchen, decorated for the season. This festive event is a big fundraiser

for the Petaluma Museum Association, so consider showing off your historic home. If you're interested or simply have questions, please email heritagepetaluma@gmail.com



2015 Award Winner: 214 Prospect Street, undergoing restoration.

Museum Highlights ...from pg 8



Mayor Glass presenting proclamation to John Maher, with Brenda Maher and Teresa Barrett.
Photo by Jim Johnson

On April 22 the PMA hosted the Butter & Egg Days opening ceremonies to kick off History Week. 2017 "Good Egg" recipient John Maher (Petaluma Pete) and "Grand Marshall" Lagunitas Brewing Company were recognized. Mayor Glass read several proclamations. Among them was the City's proclamation officially declaring the opening of Petaluma History Week which was presented to Harry Nieuwboer, PMA President.



The 2nd Annual History Trail Walk was held on April 23

Once again, our knowledgeable and creative *Petalumans of Yesteryear* brought to life the colorful and influential characters of our past and shared these individuals' stories. The group visited several historic locations at various sites. As it was last year, this event was also sold out. For those who missed out and are still interested, the *Petalumans of Yesteryear* plan a repeat performance next year.

HISTORICAL NEWS OF PETALUMA

by Solange Russek with comments by Michael Slade

We would like to acknowledge the California Digital Newspaper (CDN) Program of UC Riverside, the source of all of the items that are going to be presented in this column. The CDN Collection is a project of the Center for Bibliographical Studies and Research (CBSR) at the University of California, Riverside. The CDN Collection is supported in part by the U.S. Institute of Museum and Library Services under the provisions of the Library Services and Technology Act, administered in California by the State Librarian.

Pioneer Fever

As history exposes itself through the times, one wonders what is it that connects the masses to generate a frenzy? What was that marketing ploy? The answer is what was popular and easily available at the time! The business proprietors knew that offering something new, especially a new apparatus to make house or farm work easier would bring in the customers. The convenience to have access to local merchandise made it easier to “carve out an existence “in the newly tamed west.

However, when it came to the term “Pioneer” the meaning itself had a unique way of creating an image

of the bearded, raccoon hat buckskin wearing giant of a man that fought his way through a dangerous wilderness. Once our pioneer had settled into his new life, the term was then used by entrepreneurs to show that they were the first in their business to provide a fine service or merchandise for you! Petaluma had exactly that. The following are advertisements of business in town in the 1860’s. These advertisements also show that actual Petaluma Pioneers were also well catered for.

Marin Journal Aug 25 1866-Pioneer Society

◆◆◆

ORGANIZED.—The Pioneers of Sonoma, Napa and Marin counties, met at the American Hotel, in Petaluma, on the 16th instant, and organized a Pioneer Society, and effected a temporary organization by electing the following officers :

President—Col. G. W. Whitman, of Sonoma.

Vice Presidents—Uriah Edwards, Petaluma; Nicholas Carriger, Sonoma; G. F. Van Hollen, Novato.

Secretaries—S. Payran, Petaluma; Guadalupe Boggs, Napa.

Committee on Resolutions—Uriah Edwards, H. D. McNab, S. Payran, Lane G. Boggs.

After which the meeting adjourned to meet on the third Thursday in September, for permanent organization.

◆◆◆

Sonoma Dem Aug 13 1870

PETALUMA.

IN THE FIELD AGAIN!

L. CHAPMAN,
Formerly of the

PIONEER FURNITURE STORE!

Of Petaluma, has Re-opened

OPPOSITE THE AMERICAN HOTEL
MAIN STREET,

PETALUMA,

WITH A GOOD ASSORTMENT OF
FURNITURE, BEDDING,
CARPETS, OILCLOTHS, ETC.

aug28:tf

Sonoma Dem July 22 1865

STILL THERE.—MORRIS, the renowned tobacconist of this section of the county, may still be found at his old stand, opposite Towne's Drug Store, Petaluma. Morris, we believe, is the pioneer dealer in tobacco of Petaluma. His continued prosperity is a sufficient guarantee that he keeps none but a good article, and we know he deals upon terms quite as liberal as any can desire. He is affable in his manners and wears a smile for all who enter his store. Go and patronize him.

Sonoma Dem July 18 1861

Pioneer Wine Cellar!

Main Street,  Under Rohrer's
Above Washington. Dry Goods Store,
PETALUMA.

BAUER & TEMPEL,
Having opened as above, will keep constantly on hand
PURE NATIVE WINES!
At WHOLESALE and RETAIL.

The Bar will be supplied with the best of Liquors and Cigars, as well as Native Wines.

Mr. Tempel being a practical Wine Maker, will be pleased to meet grape growers, and impart any information in regard to the culture of the grape and the manufacture of wine that he may be possessed of, and will make contracts for any quantity of grapes to be manufactured into wine. 41

Sonoma Dem. June 8th 1867

BOB LANSDON,

HAS returned to Petaluma and taken the well-known

PIONEER RESTUARANT!

Recently kept by Ed. Cooper, where he will be glad to see his old friends in Sonoma county.

Meals at all hours, served in any style.
Petaluma, March 2, 1867-21xf.

THE PETALUMA MUSEUM ASSOCIATION
INVITES YOU
TO THE
ANNUAL
**STEAMPUNK
TO
SPEAKEASY**

GALA AT THE
HISTORIC HOTEL PETALUMA
205 KENTUCKY ST. PETALUMA

JUNE 17TH 2017 6:30PM - 10PM

FEATURING
THE STOMPY JONES BAND
THE OYSTER GIRLS
CANAPÉS, FABULOUS HORS D'OEUVRES & COCKTAILS
AMAZING AUCTION ITEMS
PRIZES FOR THE BEST STEAMPUNK & PROHIBITION DRESS

TICKETS
\$60 Single; \$100 Double.
Available at PetalumaMuseum.com

POSTER: MAXFIELD BALA



Discover and celebrate the hidden treasures held in the many historical archives within Sonoma County.

Learn about the participating organizations as they showcase their collections and discuss upcoming events.

Mini-workshops
Book Signings
Presentations

Tours of local Santa Rosa historical sites and archives.

Admission is Free





FINDING HISTORY IN SONOMA COUNTY

A DAY OF DISCOVERY

Sunday, May 21, 2017 10am – 2pm
DeTurk Round Barn
819 Donahue Street, Santa Rosa, CA 95401

For more information
email FindingHistoryDay@gmail.com
707-545-0831 x 1562
www.sonomallibrary.org
www.sonomacountyhrc.com



Historic Downtown Walking Tours



May through October
Saturdays at
10:30 a.m.
Meet at the Steps
to the Museum
Led by costumed
docents
Free
Donations accepted




**Like us on
Facebook:**

Petaluma Historical Museum

Petaluma Museum Association
Board of Directors meetings are on the
second Monday of each month at 6:00 pm.
They are open to the public.
Follow us at:
www.petalumamuseum.com
www.facebook.com/PetalumaMuseum
Twitter@petalumamuseum



STEVEN J. LAFRANCHI & ASSOCIATES, INC.
CIVIL ENGINEERS - LAND SURVEYORS - LAND PLANNERS

STEVEN J. LAFRANCHI, PE., P.L.S.
PRESIDENT

PETALUMA THEATRE SQUARE
140 SECOND STREET • SUITE 312 • PETALUMA, CA 94952
TEL 707-762-3122 FAX 707-762-3239
steve@sjlo.com




Steve vonRaesfeld | PRINCIPAL
steve@vra-arch.com

VONRAESEFELD & ASSOCIATES
ARCHITECTURE | PLANNING

ARCHITECTURE | PLANNING

108 Petaluma Boulevard North
Petaluma, California 94952
707.762.6006 • vra-arch.com

Kit Lofroos, MA LMT^{NM} | CMT^{CA}
(707)931-8212
by appointment



lofroos.org
State of NM License #2001 | State of CA Certification #14321

Email: ace@aceshirt.com Office: 707.789.9398
www.ace-promo-specialties.com Mobile: 707.486.9398



Ace Promotional
Specialties, Inc.

Ace Yurth
President / Sales

Promotional Products Banners Signs Logo Apparel

424 Payran Street Suite B Petaluma, California 94952



**SUMMIT
STATE BANK**



Clinton Howard Grove
 Born: November 4, 1918,
 Seattle, Washington
 Passed: April 3, 2017
 Petaluma, California

It was three years ago April 2015; the day Clint Grove walked into my life at the Petaluma Historical Library & Museum. Clint came in to renew his membership that he

was continuing in the name of his late wife Lorrain Bolla Grove. Clint was a spry 95 year old who walked so fast his cane could barely keep up with him.

After he introduced himself and shared some highlights of his 73 years in Petaluma, I knew I had to know more about this fine gentleman.

I recorded more hours of his life and stories of fighting in the pacific theater in WWII. One thing that was consistent with Clint was his stories and timelines.

We would chat for hours, and with his recollections, that would leave you in a state of going through a time

machine! When Clint told a story, you were right there with him. I'm grateful that he wrote a book detailing his time on the USS Astoria and the USS Denver; "One Remained on Station, One Found its Way Home." Clint wanted to share his stories, especially to the younger generations. He wanted them to learn from his generation's mistakes. "What do you think about the situation? And what are you going to do about it?" he would ask.

As Clint told the stories, I could see the honor of the spirits of the men who did not return. He also carried the honor of the men who did come home from the war, but the war never left them.

One promise I made to Clint was to immortalize his stories and make them available to future generations. Once I have digitized his oral histories, they will be available for free on line.

As Clint would say before hanging up the phone;

Bye-Bye for now.

~Solange Russek

Elder Financial Protection Network
Ruth W. Robeson, Esq.
 Executive Director

17 Keller Street, Suite A
 Petaluma, CA 94952
 707.981.8403

ruth@efprotection.org
 www.efprotection.org

DAN LUTZ
 707-763-5041
 707-763-0379 (fax)
 danlutz922@aol.com

LUTZGO INC.
 dba Lutz Chevron

Gasoline 24 Hours Convenience Store

Linda Buffo
 REALTOR®
 CalBRE 01331391

BUNDESEN
 616 Petaluma Boulevard South
 Petaluma, CA 94952
Mobile 707.696.9368
 Direct 707.769.7168
 Office 707.769.9000
 Fax 707.762.1032
 Email linda.buffo@bundeeseen.com

Each office is independently owned and operated.

Your business card here

Become a Business Sponsor, Company Sponsor or Corporate Sponsor and enjoy the many benefits at those membership levels.

Business Sponsors will have their cards appear in the newsletter four times a year.

Company or Corporate Sponsors will have their logo appear in the newsletter four times a year.

Please check out the membership brochure enclosed with this newsletter for more details.

Support your local museum!

Mythica

Cultural history classes and artistic concerts to stimulate your mind, touch your heart and inspire your soul

For more information:
www.mythicacommunity.org



**Join us for the
Annual Bell-Ringing Ceremony on July 4th**

The ceremonies will begin at 10:30 am which will include the unveiling of Petaluma's Founding Documents by Mayor Glass. Some of the *Petalumans of Yesteryear* will be making presentations also. Everyone will ring the bell and then go out for cookies and lemonade under the oak.

**McNEAR'S
RESTAURANT
& MYSTIC THEATRE**

23 Petaluma Blvd. N.,
Petaluma, CA 94952
Office: (707) 765-9211
Fax: (707) 765-4671
www.mcnears.com
www.mystictheatre.com

Kenneth O'Donnell
Owner/Booking
Cell: 707-338-8669
ken.mcnears@gmail.com

Schuster's Roost Painting
Craftsman Quality since 1989

Joseph Schuster
707.217.1253
Joe@SchustersRoost.com
License # 874721
Bonded & Insured
www.SchustersRoost.com

MOE JACOBSON - PRINCIPAL
Branch Manager, RJFS

FINANCIAL PARTNERS
WEALTH STRATEGIES
An Independent Firm

T 707.763.0354 201 Keller St.
T 800.388.1280 Petaluma, CA 94952
F 866.214.8591 moe@financialpartnersusa.com
www.financialpartnersusa.com

CA License # 0802353

SMT SPAULDING
MCCULLOUGH
& TANSIL LLP

WARREN L. DRANIT
ATTORNEY AT LAW

90 South E Street Suite 200
Santa Rosa CA 95404

Tel 707 524 1900 Santa Rosa
Tel 707 283 0000 Petaluma
dranit@smlaw.com

11 Western Avenue
Petaluma CA 94952
www.smlaw.com

U.S. Department of
Homeland Security
United States
Coast Guard

STEVE COUNTOURIOTIS
Chief, Emergency Services Branch
Command Security Officer

U. S. Coast Guard Training Center
Base Security Office, Building 230
599 Tomales Road
Petaluma, CA 94952

Tel 707-765-7765
Cell 707-364-3523
Fax 707-765-7447
Steve.J.Countouriotis@uscg.mil

Kenneth J. Nugent, CFP®
Portfolio Manager/Account Vice President Wealth Management

UBS Financial Services Inc.
555 California Street, Suite 3400
San Francisco, CA 94104
Tel. 415-954-5911, Fax 855-291-9487
Toll Free 888-283-7103
kenneth.nugent@ubs.com
http://financialservicesinc.ubs.com/fa/kennethnugent/

UBS Financial Services Inc. is a subsidiary of UBS AG. www.ubs.com

Membership

NEW MEMBERS

Kathy Andrew, Barbara Bazett, Kathleen Billings, Lynne Brett, Norman Brewer, Bonnie Brooks
Mary Christlieb, Cynthia De Martini, Gus Feissel, Lilyan Frank, Laura Homs, Karen & Dave Johnson
Elvira & Arnold Kotow, Sean Lanham, Elaine Larson, Venta Leon, Kenneth & Sharon Levien
Kathryn Lazzaretti, Amy & Joel Levine, Lin Max, Diane Mello, McNear's Restaurant & Mystic Theater
Judith & Irwin Miller, Linda Moretti, Rebecca Munroe, Tonya Parnak & Paul Kraus, Jim Passage
Donna Pontrello, Maralyn & Hans Riedel, Barbara Sargent, Tricia Schexnaydre, Betty Soldate
Eloise Van Tassel, Sue Tester, Barbara Jean Veronda

RENEWALS

George & Karen Baur, John & Louise Benanti, Donald Bennett, Pamela Aares & Bruce Bochte
Doris Bostrom, Frances Bruton, John Burton, John & Helen Charlson, Charles Craig
Andy & Helga Christiansen, Carol Conley, Sue Davis, Jeanne DeLuca, John & Linda Cheney
Warren Dranit / Attorney at Law, Pat Faverio, Marilyn Gambonini, Janet Gracyk, Kathleen Greaney
Charles & Teresa Meikle-Griswold, Jerry Groves, Evelyn Gurevitch, Kim Jacobsen, Vasanti Jayaswal
Angela Luffel, Kate Keaton, Steven Kirk, Mary Lill Lee, Lee Lipinski, Elaine Marlow, Peter Meyerhof
James & David Meyers, Pam & Bob Nelson, Judy Nunes, Betty Pagett, Alice Rebizzo, Gloria Robinson
Gayle Sarlatte, Vreni Schnirman, Phyllis Sharrow, Alma Simmons, Marilyn Sisler,
Gayle & Lloyd Smalley, Maryann Smyth, Clifford Stowe, Summit State Bank, Len & Ruth Svinth
Ann & Gerard Taylor, Mariyln Vitalie, David Waterhouse, Rick & Judy Williams, Janice Wong

DONATIONS

Angela DeCarli – 2016 Annual Appeal

Kenneth & Sharon Levien

Jane & David Meyers

Pat Faverio Florae Mickles – 2016 Annual Appeal

Alice Rebizzo

Faith Ross

Alma Simmons

Marilyn Sisler

Barbara Jean Veronda

Marilyn Vitalie

Scott & Meredith Young

– 2016 Annual Appeal

LIFETIME MEMBERS

Linda Adams & Ken Larson, Mr. & Mrs. Marv Ashman, Bacchus Real Estate, Garth Bixler & Steven Barclay, Ron Bausman
& Art Wagner, Sherri Brungart, Jim Becker, David Best & Margaret Roth Ann & Gordon Blumenfeld, Walter & Marilyn
Bragdon, Tom & Kathy Brandal, Virginia Breedlove, Sherri Brungart, Arthur & Selma Cader, Paul Canorro & Kelly Collins,
Joseph & Carol Castillo, Susan Morvay Chappell, Coddling Foundation, Clark & Susan Coolidge, James and Liz Cohee,
Steve & Judy Collins, Jim & Lori Cornaggia, John Cota & Teresa Barrett, Judy Curtis, Jack Dei, Sr., Angela E. De Carli,
Daniel & Elissa DeCaro & Family, Dennis & Charlene Deen, Marvin & Shirley Dolowitz, Diane Dorfman, Karen & James
Ely, June Ferguson, Bonna & George Flynn, C. Michael Forrest, Alice & Donald Forsyth, Jim & Kris Foster, Terry Fraser,
Paula Freund & Paul Heavenridge, Kathy & Richard Fries & Family, George & Margaret Gambonini & Family, Marvel
Gardner, Cheryl & Derlin German, Marie Isabel Girolo, Robert Girolo, Alexa Glockner, Ken & Annette Goltermann Family,
Margaret Gossett, Kathy Greene, Alice Guglielmetti, Bill & Connie Hammerman, Matt & Ginny Hautau, Mike & Beth Healy,
Toby & Pat Herfindal, Ann Hobrecht, Miriam Hodge, Timothy & Marianne Hurley, Gary & Lynn Imm, Carol Isaak, Helen
Issel, Toby Kaehler, William & Denise Kane, Roanne & Davis Kaplow, Steve & Karen Kemmerle, Bill & Lucy Kortum,
Terry Kosewic, Daniel Krieg, Jack & Verna Krout, Kathleen LaRusso, David & Mary Lee, Rollie & Shirley Leeburg,
Catherine Lehmann, Michael Lennon, Paul & Marlene Lewis, Blanch Lieb, Sid & Gerry Lipton, Connie Brandner Loughary,
Colleen Mahoney, Theresa & Peter Mahoney, Constance Mahoney, Amy Malaise & Gary Fusco, Peter Masi/Master
Cleaners, Charles & Evelyn Matteri, Elizabeth McBride & Don Shaw, Shirley B. McDonald, Mc Dowell Drug Task Force,
James & Sue Mc Isaac, Keith & Debbie McNeil, Robert & Virginia Merwin, Max Mickelsen, Flora Mickles, Pierre & Sonja
Miremont, Montoya & Associates, Ann Moreno, Tim & Lori Nelson, Tammara Norman & Edwin Hamilton, Dustin O'Brien,
Mike O'Brien, Michael Orton, Ross Parkerson, John & Karen Perlis, Edward Peterson, Ray & Ettamarie Peterson, Charles
& Mary Pheil, Russel Pleech, Shep & Velma Porter, James Power Millwork, Lawrence Reed, Dan & Ann Reed, Ed &
Bernadette Ricci, Tim & Deborah Riddle, Katherine & William Rinehart, Walter & Emily Roeder, Rotary Club of Petaluma,
Jerry & Mary-dee Roy, Gloria Salick, Warren & Susie Salmons, Nancy Sasser, Kit & Steve Schlich, Richard & Lucille
Sharke, Alba Silva, Jeff Smith & Alicia Wallace, Nicole & Dave Snider, Skip Sommer, Springfield Place, Kaye Stack,
Clarice Stasz, Thomas & Mary Stelzner, Elaine & Christopher Stevick, Barbara Tornberg, Evan Williams & Elizabeth
Tyree, UBS Financial Services, Gene & Lenore Urbain, Larry & Jan Vannucci, Vietnam Veterans of America, Chapter
563, Susan Villa & Family, Volpi's Italian Market, Michael & Elaine Von der Porten, Mary Renner & Linda Vourlogianes,
Marcie Waldron, Ruth Walker, Olga Walker, Ron & Judy Walters, Jan Widdowson, Lauren Williams, Margery Wolf,
Sarah Young, Scott & Meredith Young, Nick Zaillian, Ruth Zveinieks

Join or Renew - It's easy to do! petalumamuseum.com

1. Visit our website, petalumamuseum.com, complete the membership form and make a PayPal, Visa or Mastercard payment
2. Complete the attached form, pay with Visa or Mastercard or enclose your check made payable to the **Petaluma Museum Association** and mail it to our address on the payment form
3. Call the **PMA** office at (707) 778-4398 Monday through Friday, between 10:00 AM and 3:00 PM, and pay with your Visa or MasterCard.

MEMBERSHIP BENEFITS & CATEGORIES

BASIC BENEFITS OF ALL MEMBERSHIP CATEGORIES:

- Discounted admission to temporary exhibits (admission to the library & permanent exhibits is free to all)
- Reserved seating at the Butter & Egg Parade
- Subscription to and acknowledgement in the **PMA** newsletter
- Personalized membership card
- 10% off Museum store merchandise
- 10% off gift memberships
- Invitations to previews & receptions

INDIVIDUAL \$35

All Basic Benefits
(\$20 memberships are available in this category to: Seniors, Educators, Students. Military is free)

FAMILY / DUAL \$70

All Basic Benefits, PLUS:
•Extension of Basic Benefits to an additional adult & children in the same household up to age 17
•Two personalized membership cards

RECIPROCAL MUSEUM MEMBERSHIP PRIVILEGES - "Museum Goer" Benefit

If you join the **PMA** at the Supporter level (\$125) or higher, you will receive free or discounted admission to more than 600 museums in the U.S. Some of the top Bay Area participating museums are:
Asian Art Museum • Walt Disney Family Museum • de Young Museum • Legion of Honor
CA Historical Society Museum • Charles M. Schulz Museum • Sonoma County Museum

SUPPORTER \$125

All Family / Dual Benefits, PLUS:
•Reciprocal Museum Membership Privileges

BUSINESS SPONSOR \$150

All Supporter Benefits, PLUS:
•Your business card in the **PMA** newsletter

PATRON \$400

All Supporter Benefits, PLUS:
•Personalized exhibit tour for you and 10 guests
•Listing of your name on the Museum's Donor Wall

COMPANY SPONSOR \$500

All Patron Benefits, PLUS:
•Your company logo in the **PMA** newsletter

BENEFACTOR \$750 +

All Patron Benefits, PLUS:
•Opportunity to be named the benefactor of a temporary exhibit or annual program

CORPORATE SPONSOR \$1,000 +

All Benefactor Benefits, PLUS:
•Your corporation's logo in the **PMA** newsletter

Payment Options:

- Enclosed is my check made payable to the Petaluma Museum Association
- Charge \$ _____ to my
 Visa MasterCard

Card #: _____

Expiration Date: _____

Signature: _____

Member Options:

- I am interested in volunteering.
- I am interested in becoming a "Legacy Donor."
- I am interested in including the **PMA** in my Charitable Trust.
- Enclosed is my additional donation of \$ _____.

Petaluma Museum Association
Petaluma Historical Library & Museum
20 Fourth Street
Petaluma, CA 94952-3004

If you prefer, you can register your membership online at petalumamuseum.com, or call 707-778-4398

PETALUMA MUSEUM ASSOCIATION Membership Categories

- Individual \$35
 Senior, Educator, Student \$20. Military free
- Family / Dual \$70
- Supporter \$125 *
- Patron \$400 *
- Benefactor \$750 + *
- Business Sponsor \$150 *
- Company Sponsor \$500 *
- Corporate Sponsor \$1,000 + *
- * Reciprocal Museum Membership Levels

I want to Initiate a **PMA** membership

I want to renew a **PMA** membership

Name: _____

Address: _____

City/State: _____

Zip: _____

Phone: _____

Email: _____



Museum Collection Update

by Solange Russek
Museum Collections Manager

Collection Spotlight:

We would like to thank once again Eugene Spear for his donation of the two beautiful gold framed paintings of Albion and Susan Whitney. Also donated is the Freemason Sword belonging to Mr. Whitney. You will learn more about the Whitney's and many other early Petaluma Pioneers during the Portraits of Petaluma Pioneers starting June 10th through September 25, 2017 curated by Paula Freund.



PETALUMA MUSEUM ASSOCIATION
Petaluma Historical Library & Museum
20 4th St.
Petaluma, CA 94952
www.petalumamuseum.com

Non Profit Org
U.S. Postage
PAID
Petaluma, CA
Permit No. 301



Find out more about this photo on page 6